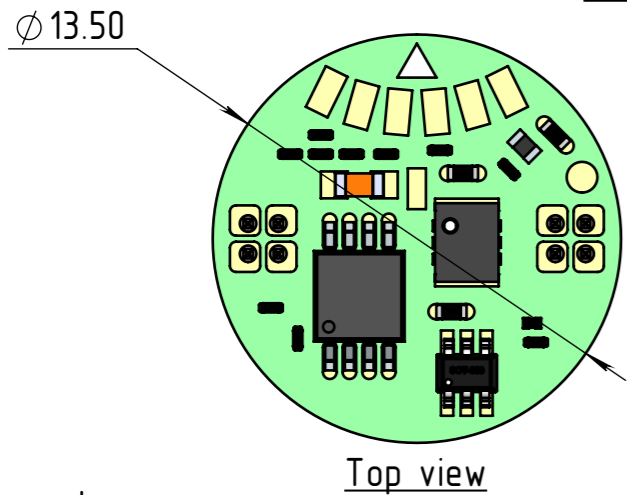
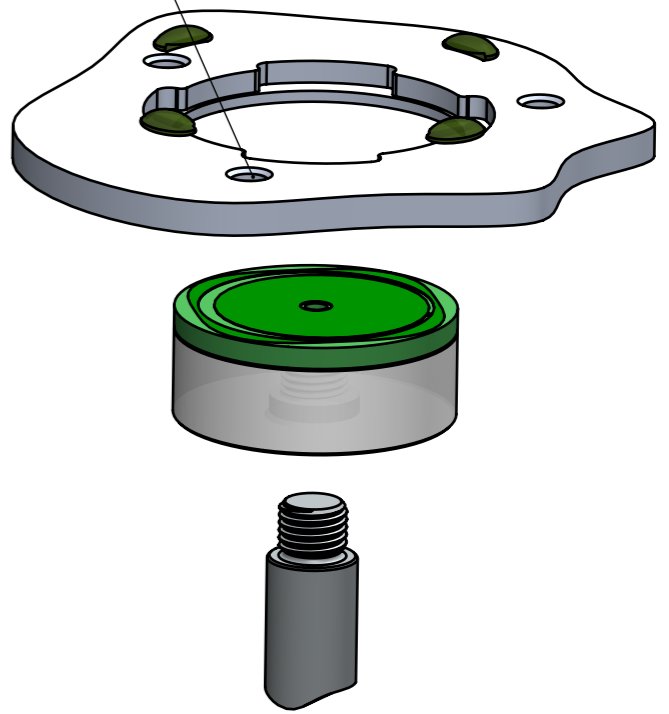
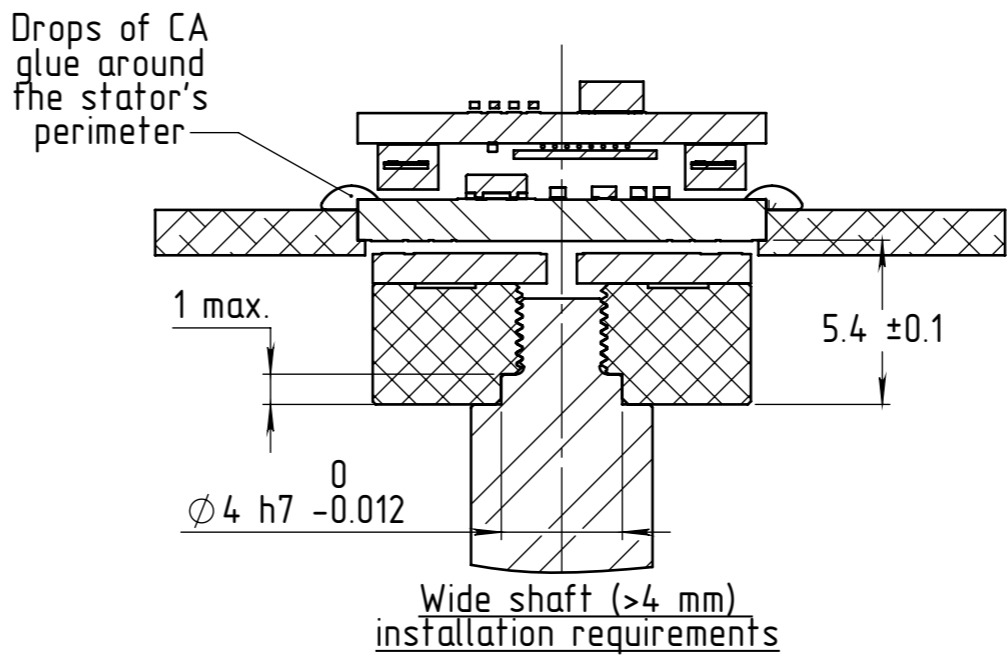
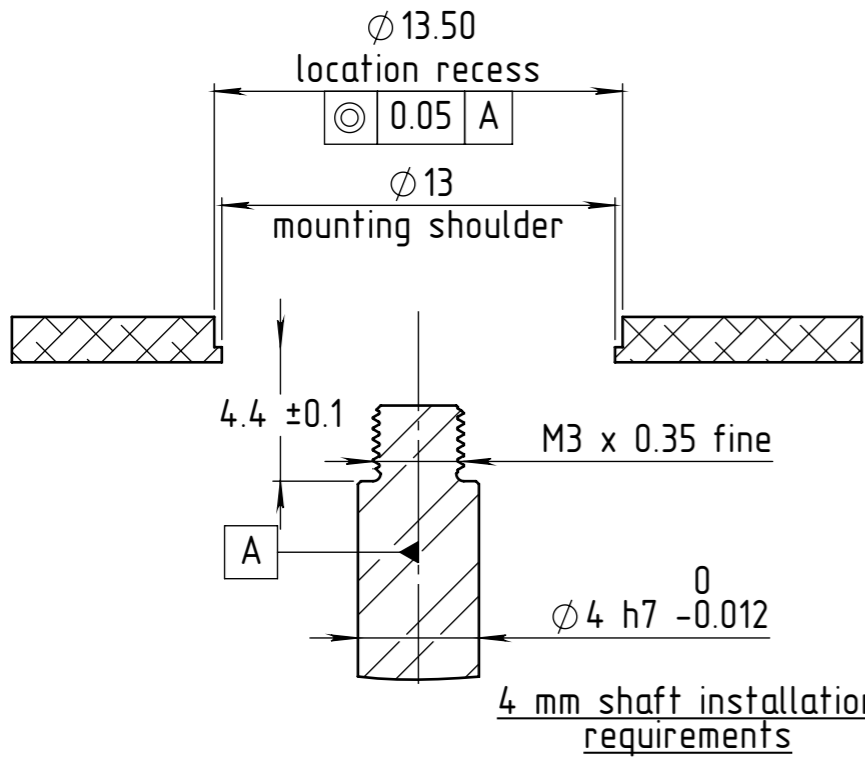
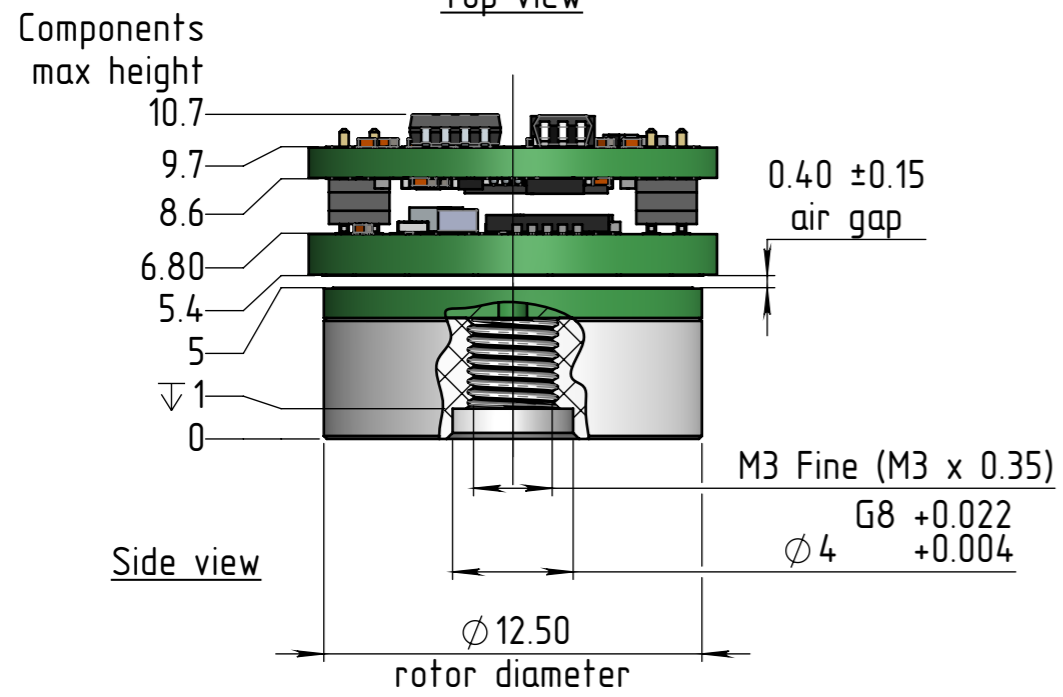
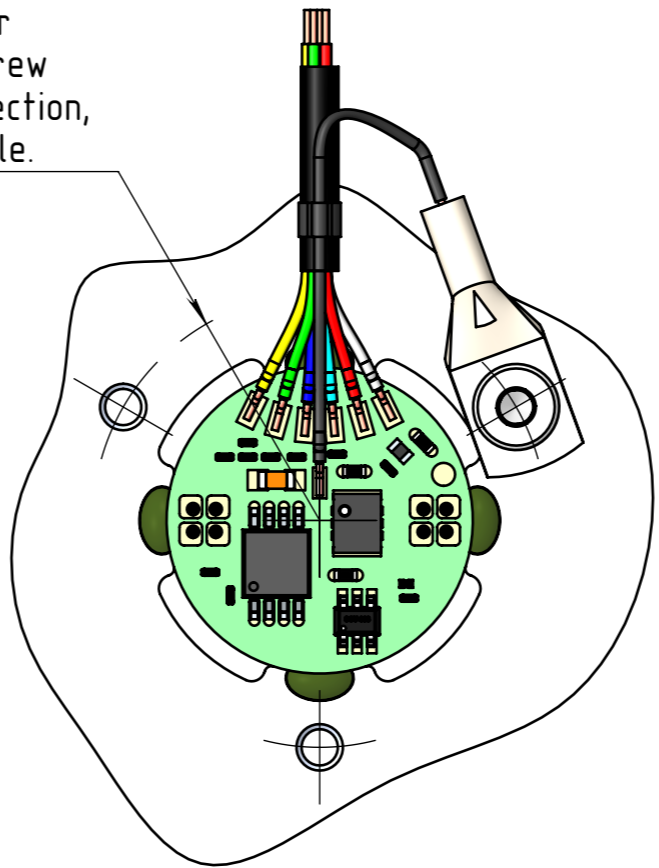


REVISIONS				
ZONE	REV.	DESCRIPTION	DATE	DRAWN
	01	Terminal lug connection added	29-Mar-2026	Michael A.



$R_{20.00}$
 $R_{10.00}$
 range of radii for positioning the screw hole for ground connection, within a 120° angle.



The information contained in this drawing is the sole property of Netzer Precision Position Sensors A.C.S. Ltd. Any reproduction in part or whole without the written permission of Netzer Precision Position Sensors A.C.S. Ltd. is prohibited. The drawing is confidential, and is the property of Netzer Precision Ltd. It must not be disclosed to a third party without written consent of Netzer Precision Ltd.

NAME	SIGNATURE	DATE
DRAWN Michael Agami MA		16-Feb-2025
CHK'D		
APPV'D		

UNLESS OTHERWISE SPECIFIED:
 DIMENSIONS ARE IN: mm SURFACE FINISH: N6
 0.5 - 4.9: ±0.05 mm 5 - 30: ±0.1 mm
 31 - 120: ±0.15 mm 121 - 400: ±0.2 mm
 401 - 1000: ±0.3 mm 1001 - 2000: ±0.5 mm
 Between holes: ±0.05 mm Angles: ±0.5°
 On all edges make chamfer 0.1 mm x 45°

TITLE: VL-13 Mechanical Interface		SCALE: 2:1
MATERIAL:	Coating:	
PROJECT: VL-13	Revision: 01	A3
CAT NO.: VL-13 ICD		SHEET 1 OF 1