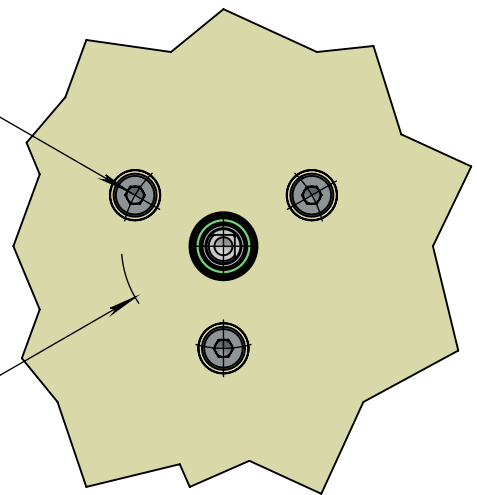
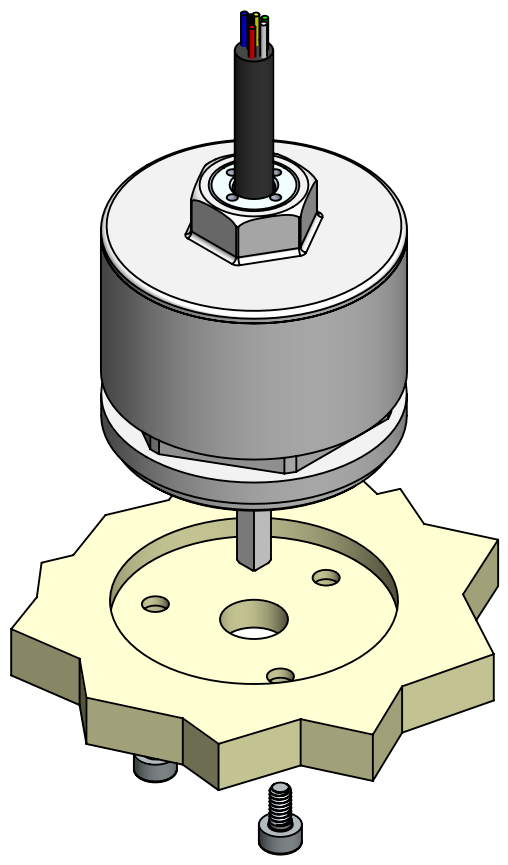
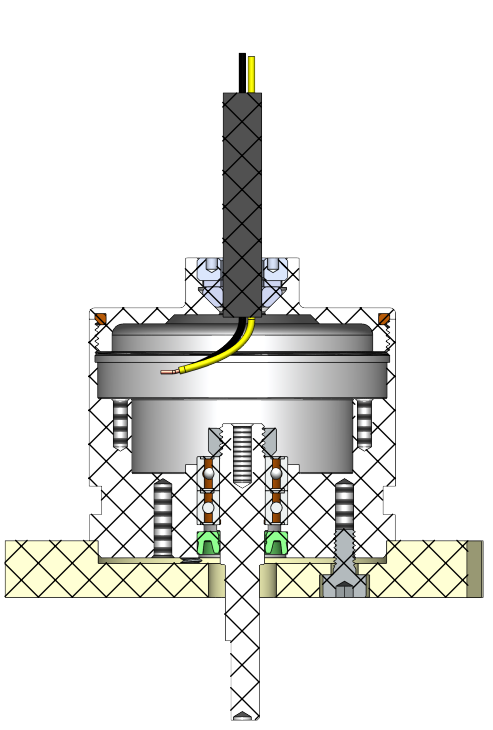


Three M2 screws,
every 120°

Ø 18 or Ø 14
by customer's choice



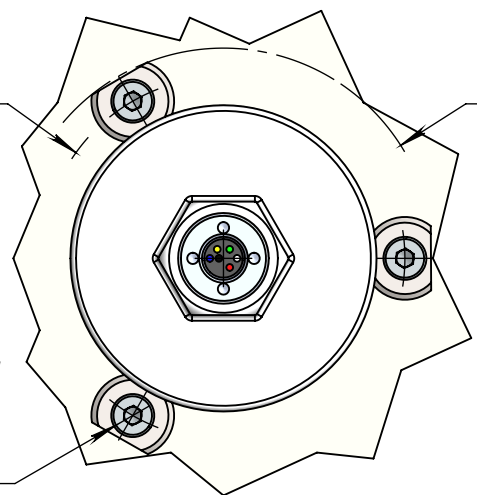
Flange bottom mounting - sample
(with three standard screws)



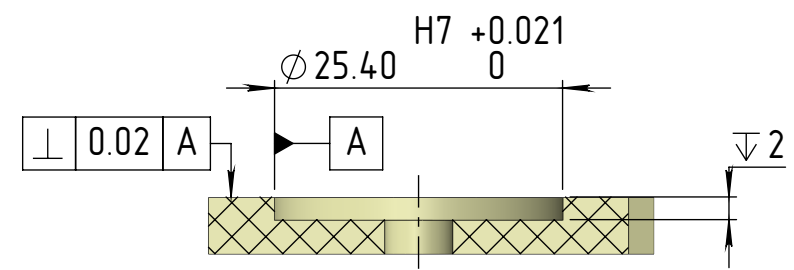
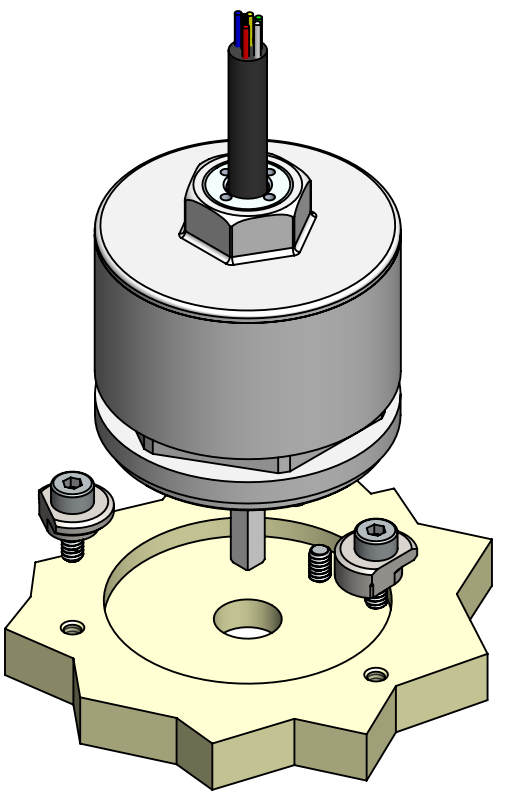
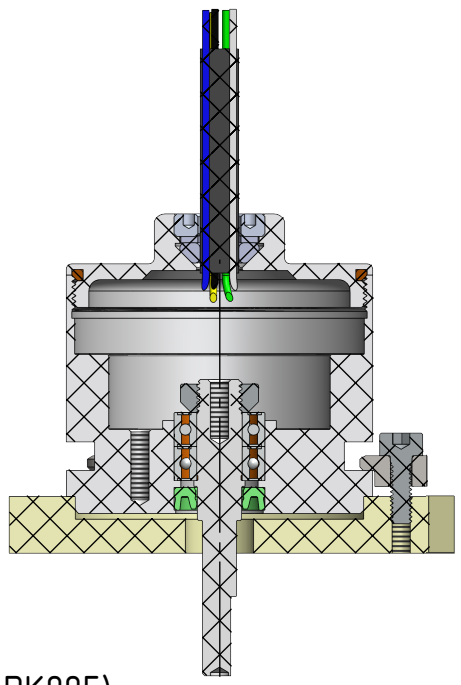
Ø 32
PCD for clamps screws


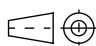
Ø 37.1^{+0.5}
boundary

Three clamps MA-00007
with M2 screws,
every 120°



Special clamps mounting - sample
(with three clamps supplied as optional kit EAPK005)



The information contained in this drawing is the sole property of Netzer Precision Position Sensors A.C.S. Ltd. Any reproduction in part or whole without the written permission of Netzer Precision Position Sensors A.C.S. Ltd. is prohibited. The drawing is confidential, and is the property of Netzer Precision Ltd. It must not be disclosed to a third party without written consent of Netzer Precision Ltd.					
	NAME	SIGNATURE	DATE	 Precision Position Sensors A.C.S. Ltd.	
DRAWN	Michael Agami	MA	16-Feb-2025		
CHK'D					
APPV'D					
UNLESS OTHERWISE SPECIFIED:				TITLE: <i>DL-27 Double D-section shaft ICD</i>	
DIMENSIONS ARE IN: mm		SURFACE FINISH: N6			
0.5 - 4.9: ±0.05 mm		5 - 30: ±0.1 mm		MATERIAL:	
31 - 120: ±0.15 mm		121 - 400: ±0.2 mm		Coating: Note 3	
401 - 1000: ±0.3 mm		1001 - 2000: ±0.5 mm		Revision :	
Between holes: ±0.05 mm		Angles: ±0.5°		00	
On all edges make chamfer 0.1 mm x 45°				A3	
PROJECT: <i>DL-27</i>				SHEET 1 OF 1	
CAT NO.: <i>DL-27 Double D-section shaft ICD</i>					

