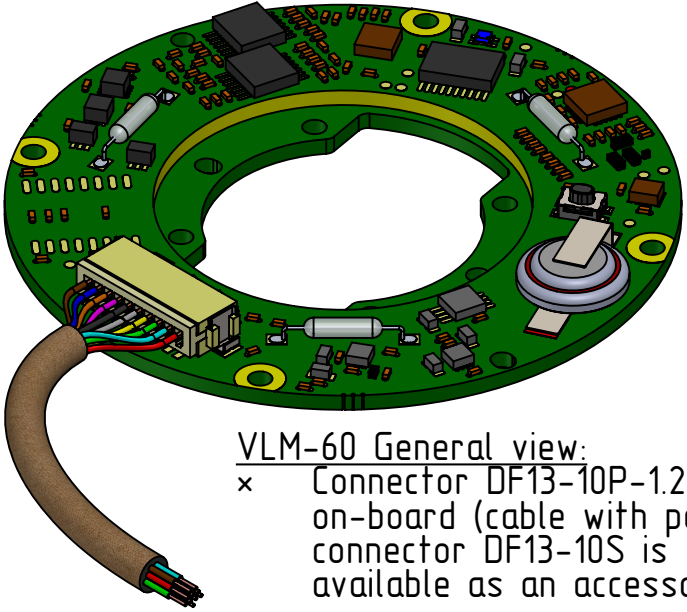
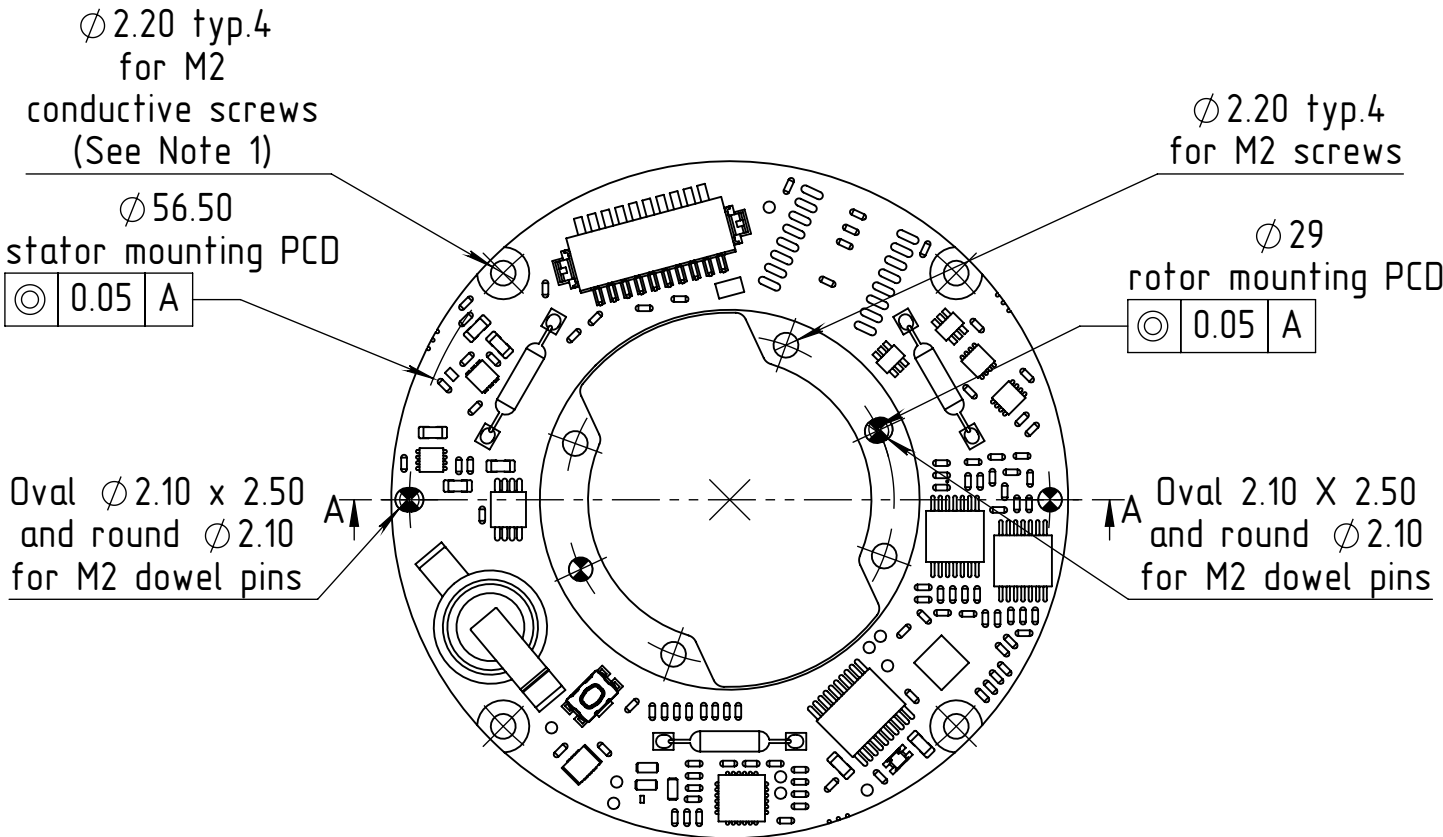
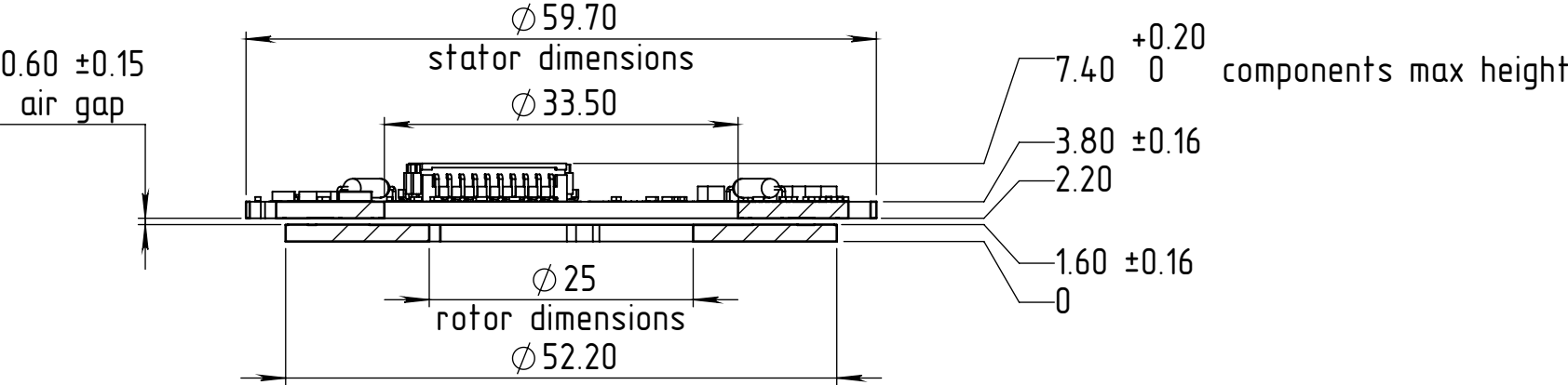

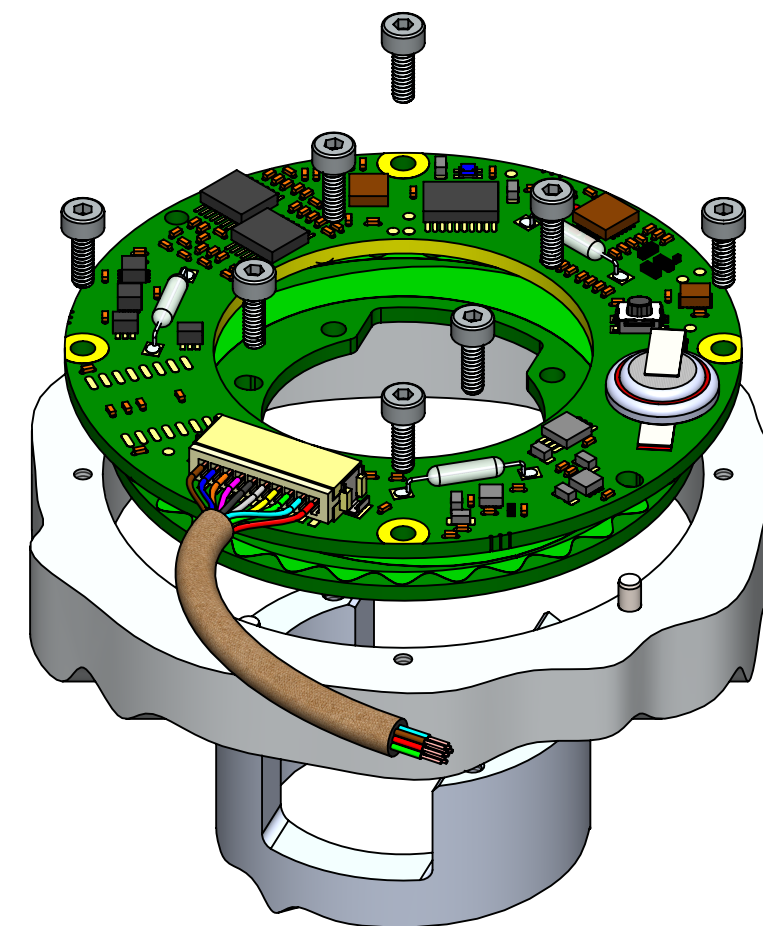
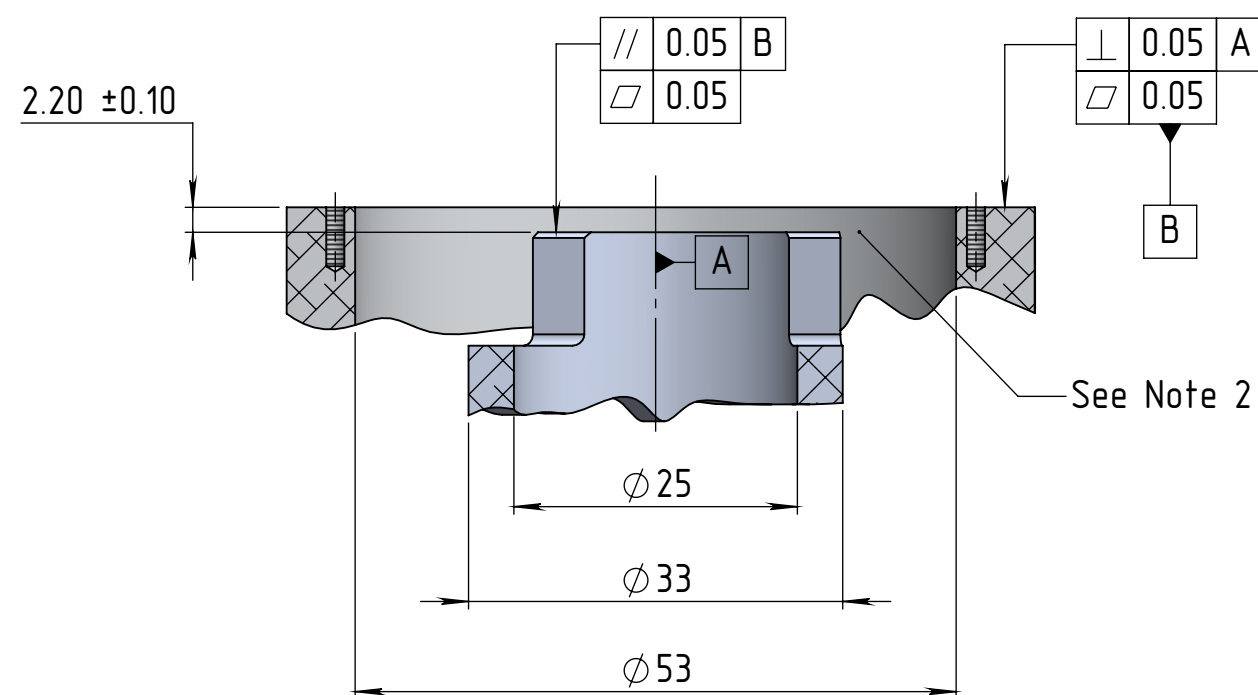


REVISIONS				
ZONE	REV.	DESCRIPTION	DATE	DRAWN



Notes:  
1. It is important to use conductive screws for the stator mounting for PCB grounding.


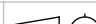
The information contained in this drawing is the sole property of Netzer Precision Position Sensors A.C.S. Ltd. Any reproduction in part or whole without the written permission of Netzer Precision Position Sensors A.C.S. Ltd. is prohibited. The drawing is confidential, and is the property of Netzer Precision Ltd. It must not be disclosed to a third party without written consent of Netzer Precision Ltd.			
	NAME	SIGNATURE	DATE
DRAWN	Michael Agami	MA	19-May-2025
CHK'D			
APPV'D			
UNLESS OTHERWISE SPECIFIED:			
DIMENSIONS ARE IN: mm		SURFACE FINISH: N6	
0.5 - 4.9: ±0.05 mm		5 - 30: ±0.1 mm	
31 - 120: ±0.15 mm		121 - 400: ±0.2 mm	
401 - 1000: ±0.3 mm		1001 - 2000: ±0.5 mm	
Between holes: ±0.05 mm		Angles: ±0.5°	
On all edges make chamfer 0.1 mm x 45°			
<div> Precision Position Sensors A.C.S. Ltd.</div>			
TITLE: <i>VLM-60 Mechanical Interface</i>			
MATERIAL:		Coating:	SCALE: 1.5:1
PROJECT: <i>VLM-60</i>		Revision: <i>00</i>	<i>A3</i>
CAT NO.: <i>VLM-60 ICD</i>		SHEET 1 OF 2	



Mounting sample - exploded view

Notes:

2. It has to be 2 mm or thicker air gap or adapter mad of non-conductive material below the rotor lower surface between diameters 34 and 52.2 mm — to prevent parasitic capacitance.
3. Screws closing torques — per screws spec.
4. The specified base and shaft diameters are recommended but not mandatory.
5. Both stator and rotor are positioned and centered by M2 dowel pins.

The information contained in this drawing is the sole property of Netzer Precision Position Sensors A.C.S. Ltd. Any reproduction in part or whole without the written permission of Netzer Precision Position Sensors A.C.S. Ltd. is prohibited. The drawing is confidential, and is the property of Netzer Precision Ltd. It must not be disclosed to a third party without written consent of Netzer Precision Ltd.			
	NAME	SIGNATURE	DATE
DRAWN	Michael Agam	MA	19-May-2025
CHK'D			
APPV'D			
UNLESS OTHERWISE SPECIFIED:			
DIMENSIONS ARE IN: mm		SURFACE FINISH: N6	
0.5 - 4.9: ±0.05 mm		5 - 30: ±0.1 mm	
31 - 120: ±0.15 mm		121 - 400: ±0.2 mm	
401 - 1000: ±0.3 mm		1001 - 2000: ±0.5 mm	
Between holes: ±0.05 mm		Angles: ±0.5°	
On all edges make chamfer 0.1 mm x 45°			
<div><div> Precision Position Sensors A.C.S. Ltd.</div></div>			
TITLE: <i>VLM-60 Mechanical Interface</i>			
MATERIAL:		Coating:	SCALE: 1.5:1
PROJECT: <i>VLM-60</i>		Revision: <i>00</i>	<i>A3</i>
CAT NO.: <i>VLM-60 ICD</i>			SHEET 2 OF 2