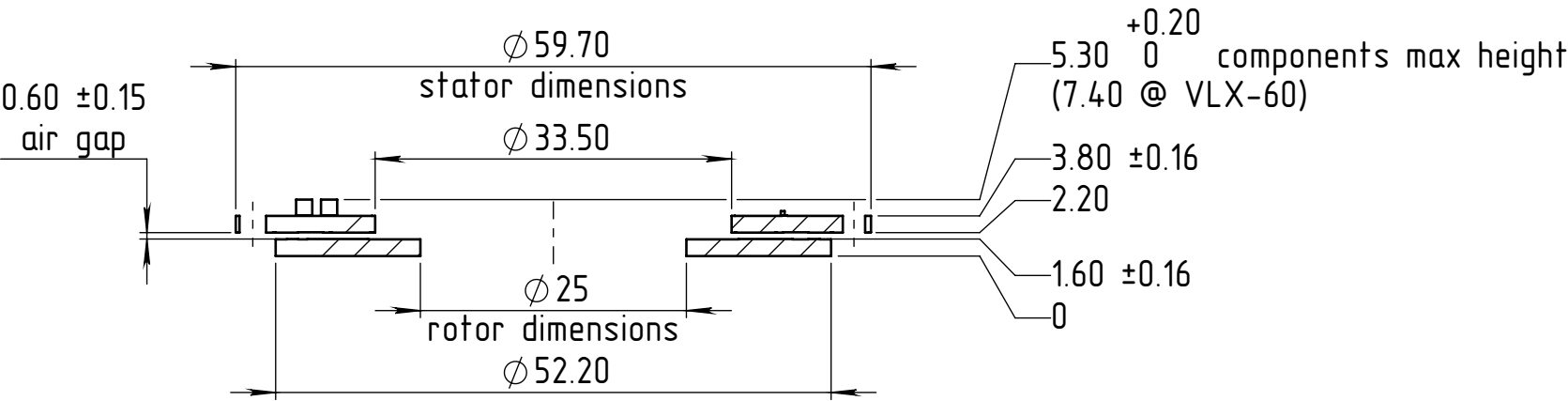
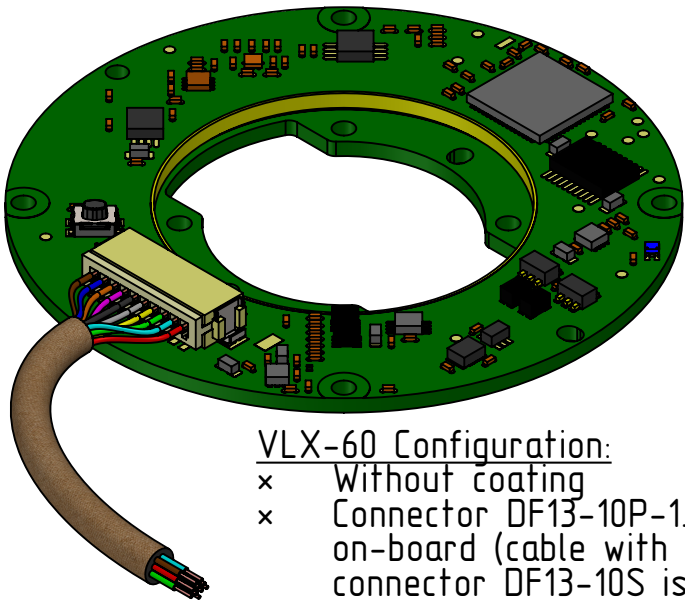
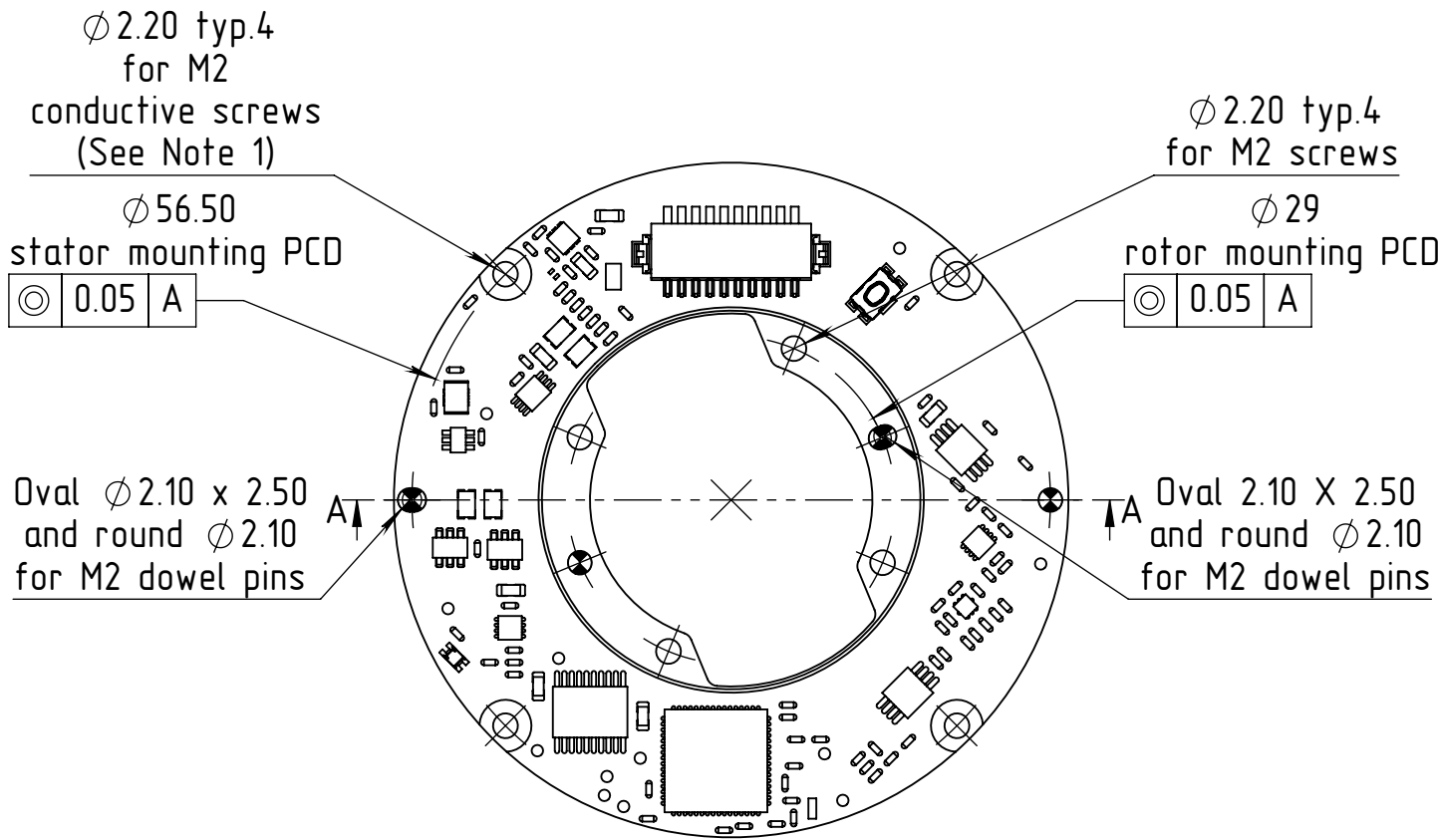


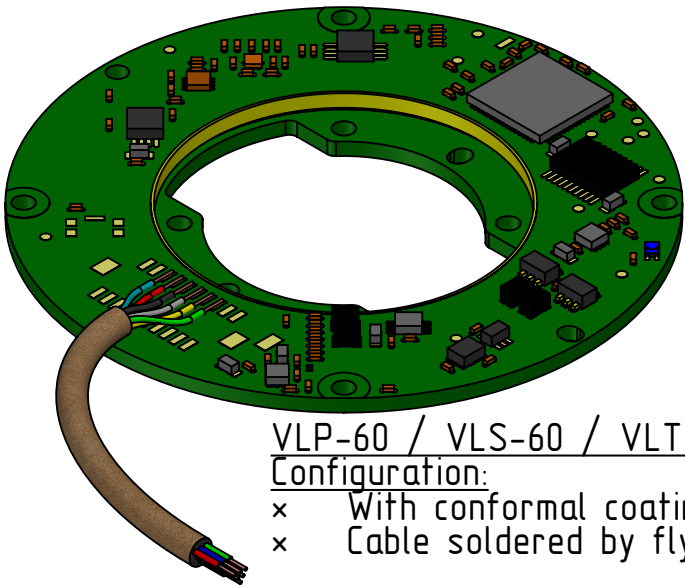
REVISIONS				
ZONE	REV.	DESCRIPTION	DATE	DRAWN



SECTION A-A  
encoder dimensions



- VLX-60 Configuration:**
- x Without coating
  - x Connector DF13-10P-1.25H on-board (cable with pairing connector DF13-10S is available as an accessory)
  - x Push button

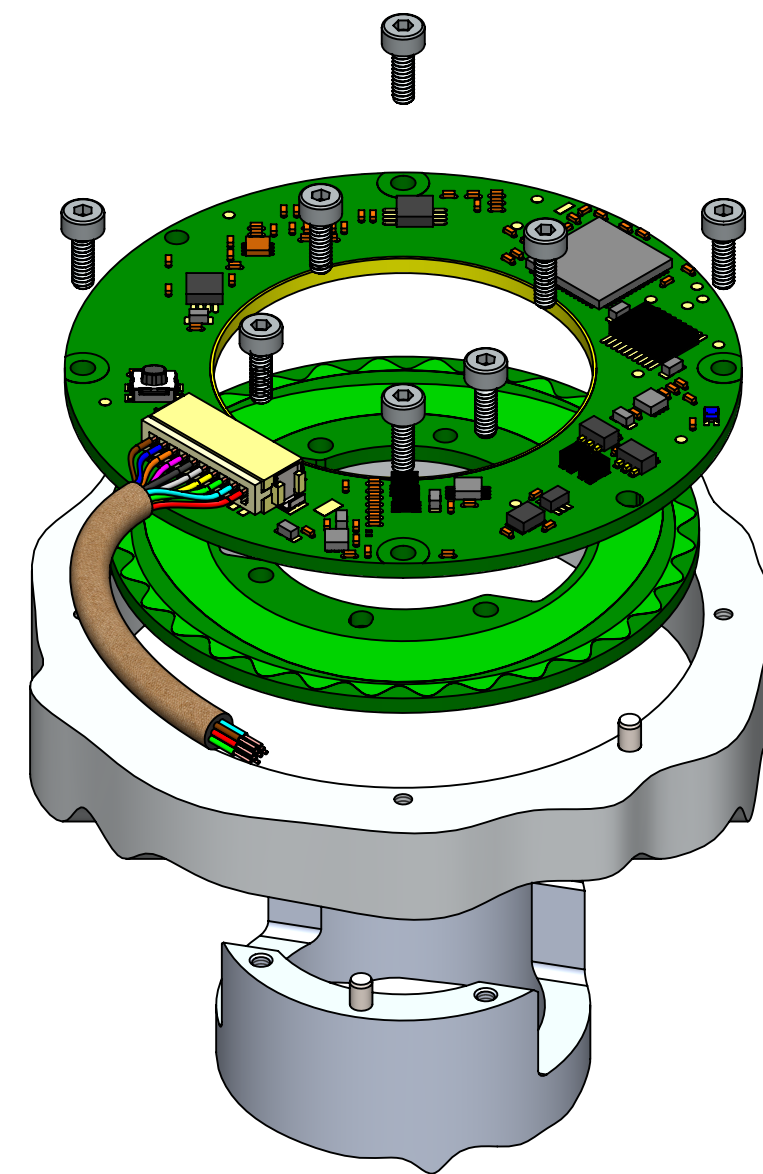
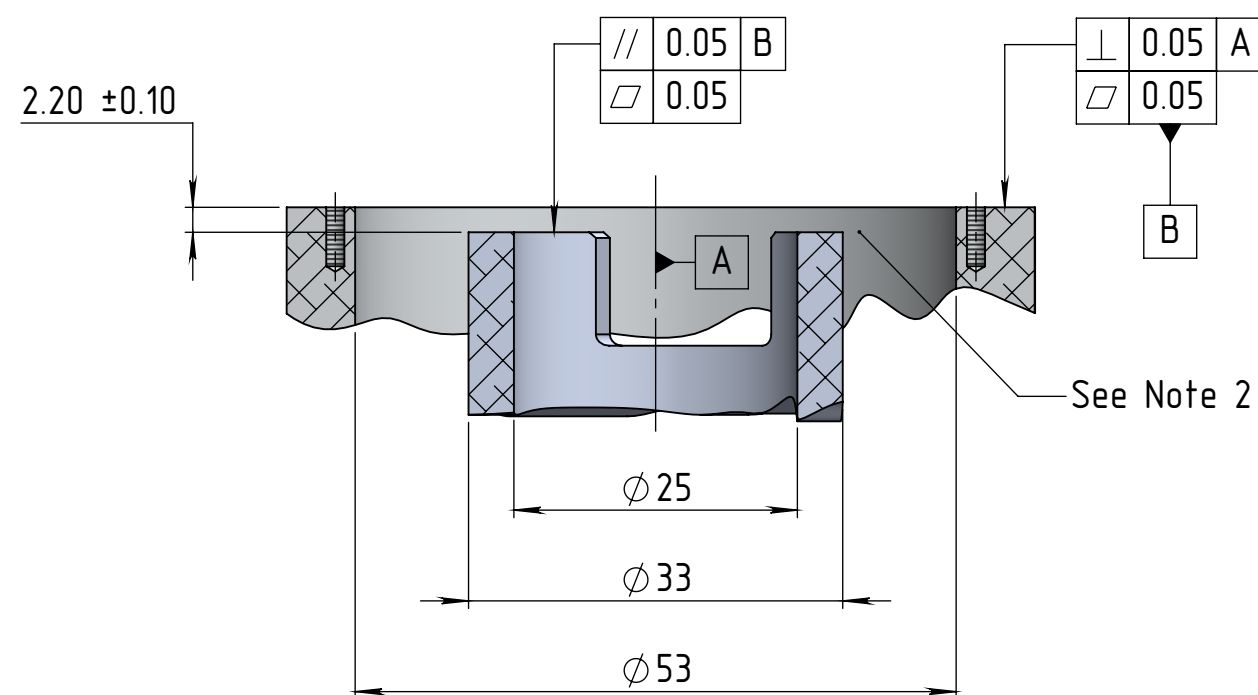


- VLP-60 / VLS-60 / VLT-60 Configuration:**
- x With conformal coating
  - x Cable soldered by flying leads

**Notes:**

1. It is important to use conductive screws for the stator mounting for PCB grounding.

The information contained in this drawing is the sole property of Netzer Precision Position Sensors A.C.S. Ltd. Any reproduction in part or whole without the written permission of Netzer Precision Position Sensors A.C.S. Ltd. is prohibited. The drawing is confidential, and is the property of Netzer Precision Ltd. It must not be disclosed to a third party without written consent of Netzer Precision Ltd.			
NAME	SIGNATURE	DATE	
DRAWN Michael Agami	MA	24-Apr-2025	
CHK'D			
APPV'D			
UNLESS OTHERWISE SPECIFIED:			TITLE: VL-60 Mechanical Interface
DIMENSIONS ARE IN: mm	SURFACE FINISH: N6		
0.5 - 4.9: ±0.05 mm	5 - 30: ±0.1 mm	MATERIAL:	Coating:
31 - 120: ±0.15 mm	121 - 400: ±0.2 mm	PROJECT: VL-60	Revision: 00
401 - 1000: ±0.3 mm	1001 - 2000: ±0.5 mm	CAT NO.: VL-60 ICD	SCALE: 1.5:1
Between holes: ±0.05 mm	Angles: ±0.5°		A3
On all edges make chamfer 0.1 mm x 45°			SHEET 1 OF 2



Mounting sample - exploded view

#### Notes:

2. It has to be 2 mm or thicker air gap or adapter mad of non-conductive material below the rotor lower surface between diameters 34 and 52.2 mm — to prevent parasitic capacitance.
3. Screws closing torques — per screws spec.
4. The specified base and shaft diameters are recommended but not mandatory.
5. Both stator and rotor are positioned and centered by M2 dowel pins.

The information contained in this drawing is the sole property of Netzer Precision Position Sensors A.C.S. Ltd. Any reproduction in part or whole without the written permission of Netzer Precision Position Sensors A.C.S. Ltd. is prohibited. The drawing is confidential, and is the property of Netzer Precision Ltd. It must not be disclosed to a third party without written consent of Netzer Precision Ltd.			
	NAME	SIGNATURE	DATE
DRAWN	Michael Agami	MA	24-Apr-2025
CHK'D			
APPV'D			
UNLESS OTHERWISE SPECIFIED:		TITLE: VL-60 Mechanical Interface	
DIMENSIONS ARE IN: mm		SURFACE FINISH: N6	
0.5 - 4.9: ±0.05 mm		5 - 30: ±0.1 mm	
31 - 120: ±0.15 mm		121 - 400: ±0.2 mm	
401 - 1000: ±0.3 mm		1001 - 2000: ±0.5 mm	
Between holes: ±0.05 mm		Angles: ±0.5°	
On all edges make chamfer 0.1 mm x 45°		MATERIAL: Coating: SCALE: 1.5:1	
PROJECT: VL-60		Revision: 00	
CAT NO.: VL-60 ICD		A3	
		SHEET 2 OF 2	