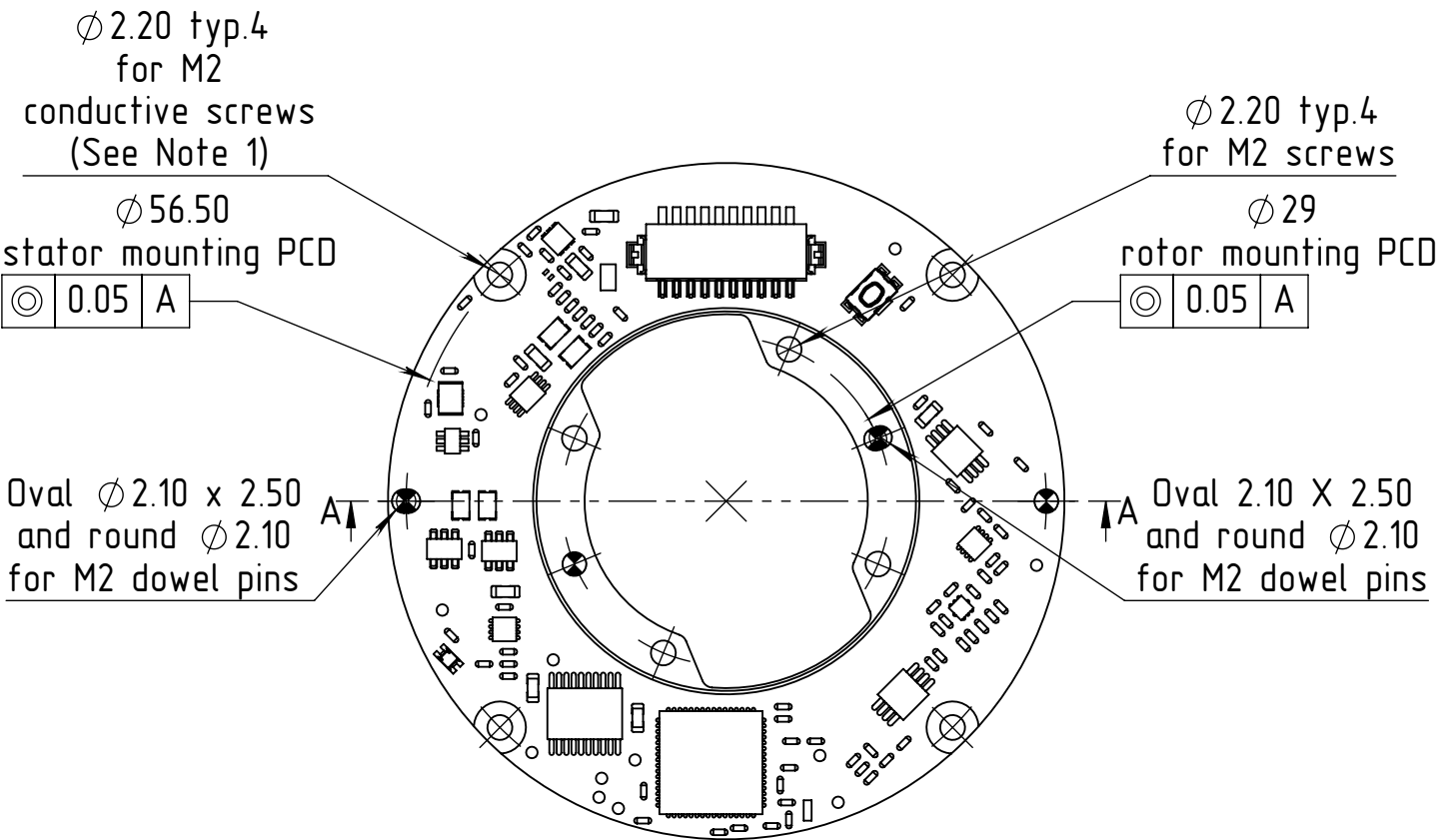
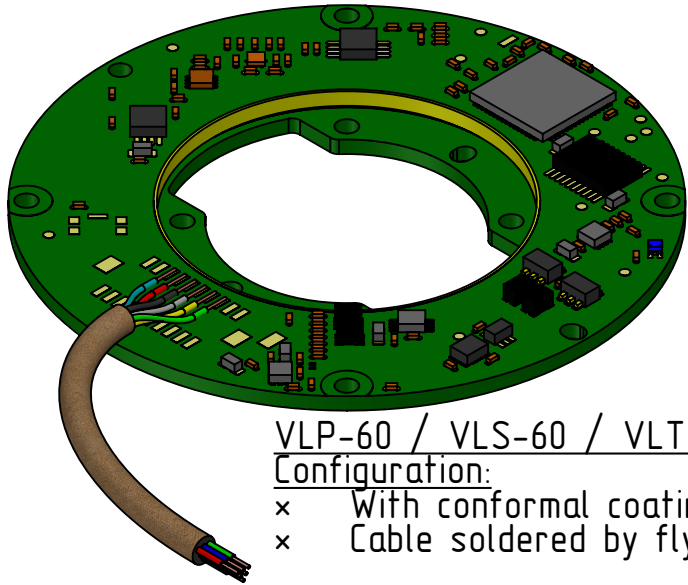
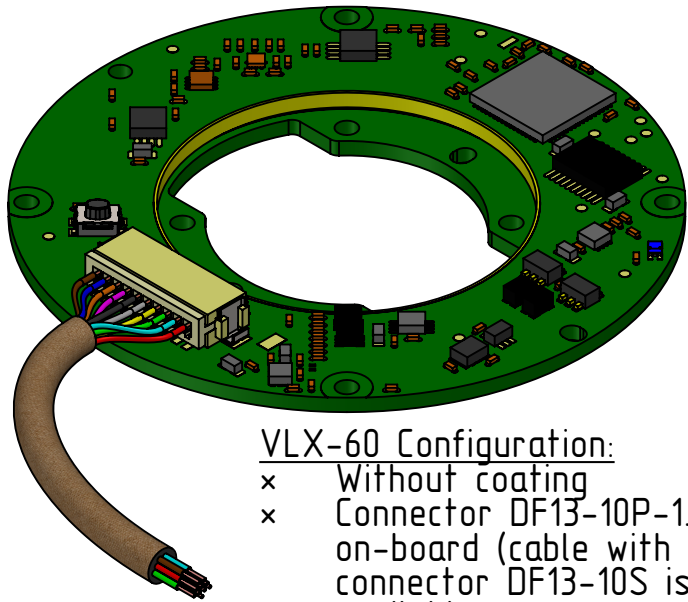
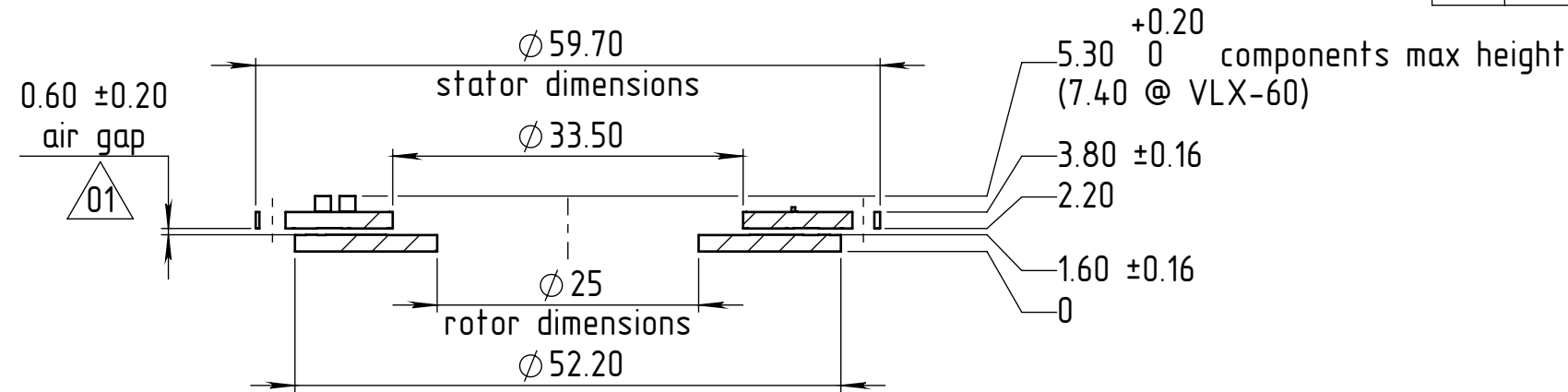


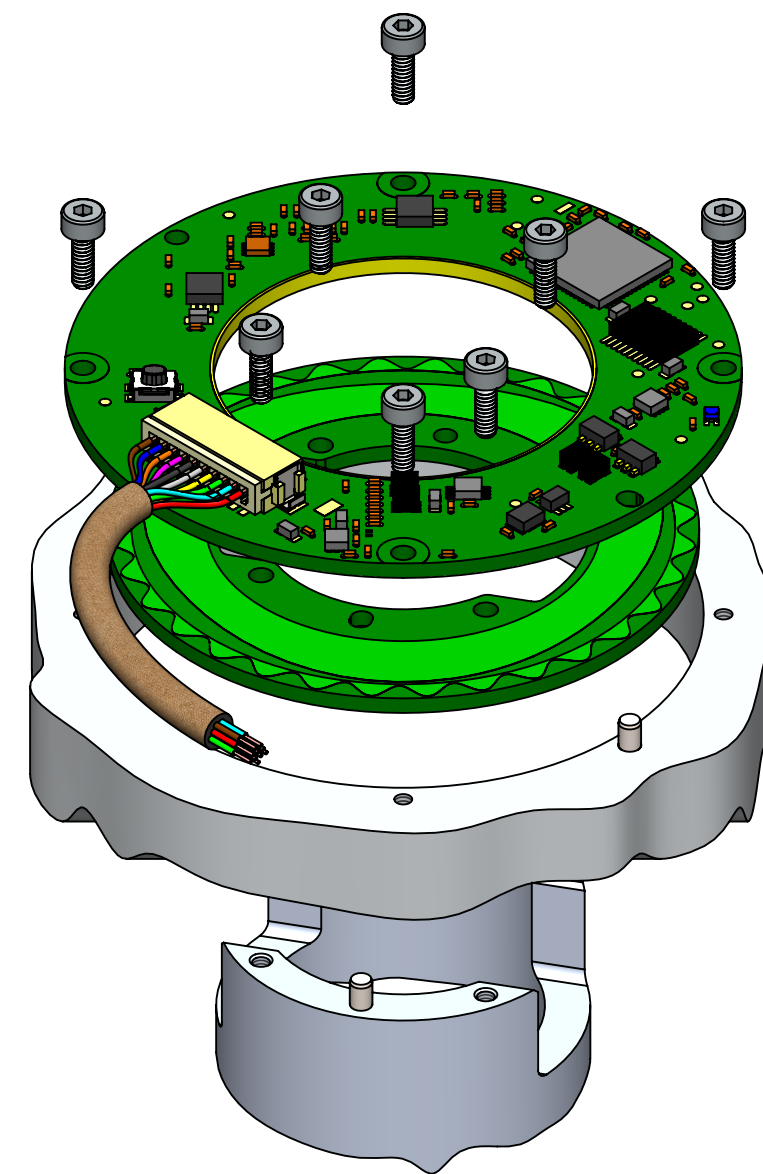
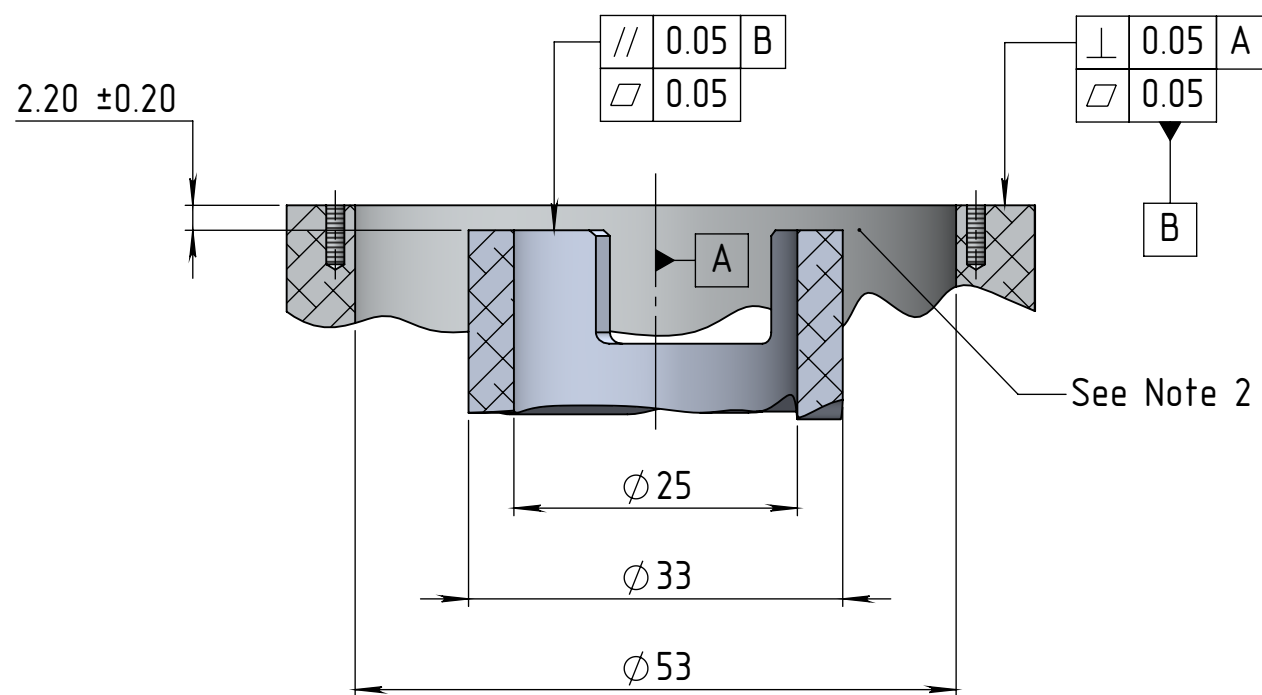
REVISIONS				
ZONE	REV.	DESCRIPTION	DATE	DRAWN
B1	01	Axial tolerance was allowed to $\pm 0.2$	05-Aug-2025	Michael A.



Notes:

1. It is important to use conductive screws for the stator mounting for PCB grounding.

The information contained in this drawing is the sole property of Netzer Precision Position Sensors A.C.S. Ltd. Any reproduction in part or whole without the written permission of Netzer Precision Position Sensors A.C.S. Ltd. is prohibited. The drawing is confidential, and is the property of Netzer Precision Ltd. It must not be disclosed to a third party without written consent of Netzer Precision Ltd.			
NAME	SIGNATURE	DATE	
DRAWN Michael Agami	MA	24-Apr-2025	
CHK'D			
APPV'D			
UNLESS OTHERWISE SPECIFIED:			TITLE: VL-60 Mechanical Interface
DIMENSIONS ARE IN: mm		SURFACE FINISH: N6	
0.5 - 4.9: $\pm 0.05$ mm	5 - 30: $\pm 0.1$ mm		
31 - 120: $\pm 0.15$ mm	121 - 400: $\pm 0.2$ mm		
401 - 1000: $\pm 0.3$ mm	1001 - 2000: $\pm 0.5$ mm		
Between holes: $\pm 0.05$ mm	Angles: $\pm 0.5^\circ$		
On all edges make chamfer 0.1 mm x 45°			
MATERIAL:			Coating:
PROJECT: VL-60			Revision: 01
CAT NO.: VL-60 ICD			SCALE: 1.5:1
			A3
			SHEET 1 OF 2



Mounting sample - exploded view

Notes:

2. It has to be 2 mm or thicker air gap or adapter mad of non-conductive material below the rotor lower surface between diameters 34 and 52.2 mm — to prevent parasitic capacitance.
3. Screws closing torques — per screws spec.
4. The specified base and shaft diameters are recommended but not mandatory.
5. Both stator and rotor are positioned and centered by M2 dowel pins.

The information contained in this drawing is the sole property of Netzer Precision Position Sensors A.C.S. Ltd. Any reproduction in part or whole without the written permission of Netzer Precision Position Sensors A.C.S. Ltd. is prohibited. The drawing is confidential, and is the property of Netzer Precision Ltd. It must not be disclosed to a third party without written consent of Netzer Precision Ltd.			
	NAME	SIGNATURE	DATE
DRAWN	Michael Agami	MA	24-Apr-2025
CHK'D			
APPV'D			
UNLESS OTHERWISE SPECIFIED:		TITLE: VL-60 Mechanical Interface	
DIMENSIONS ARE IN: mm		SURFACE FINISH: N6	
0.5 - 4.9: ±0.05 mm		5 - 30: ±0.1 mm	
31 - 120: ±0.15 mm		121 - 400: ±0.2 mm	
401 - 1000: ±0.3 mm		1001 - 2000: ±0.5 mm	
Between holes: ±0.05 mm		Angles: ±0.5°	
On all edges make chamfer 0.1 mm x 45°			
MATERIAL:		Coating:	SCALE: 1.5:1
PROJECT: VL-60		Revision: 01	A3
CAT NO.: VL-60 ICD			SHEET 2 OF 2