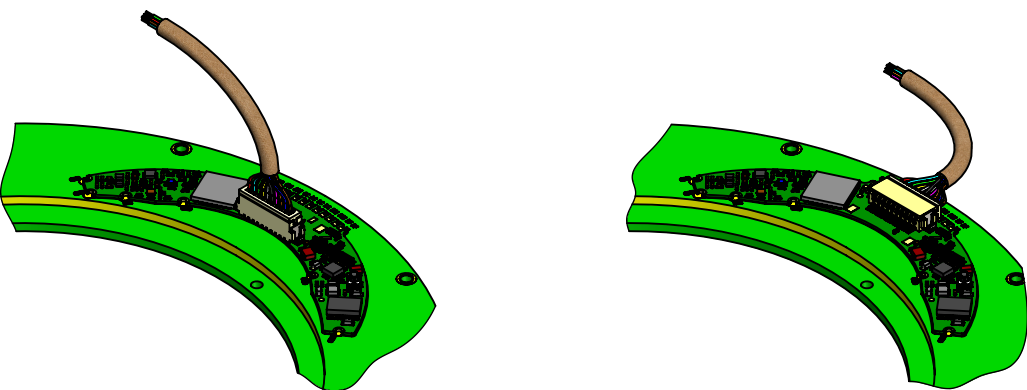
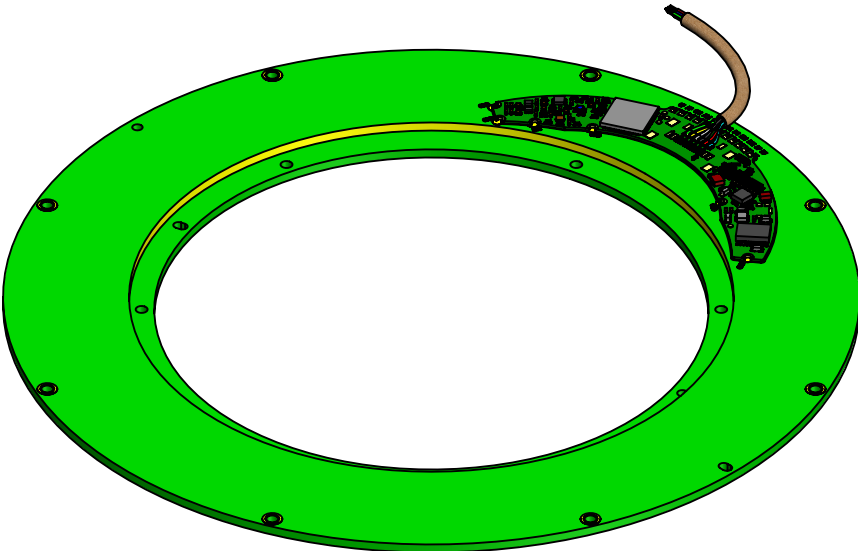


REVISIONS				
ZONE	REV.	DESCRIPTION	DATE	DRAWN





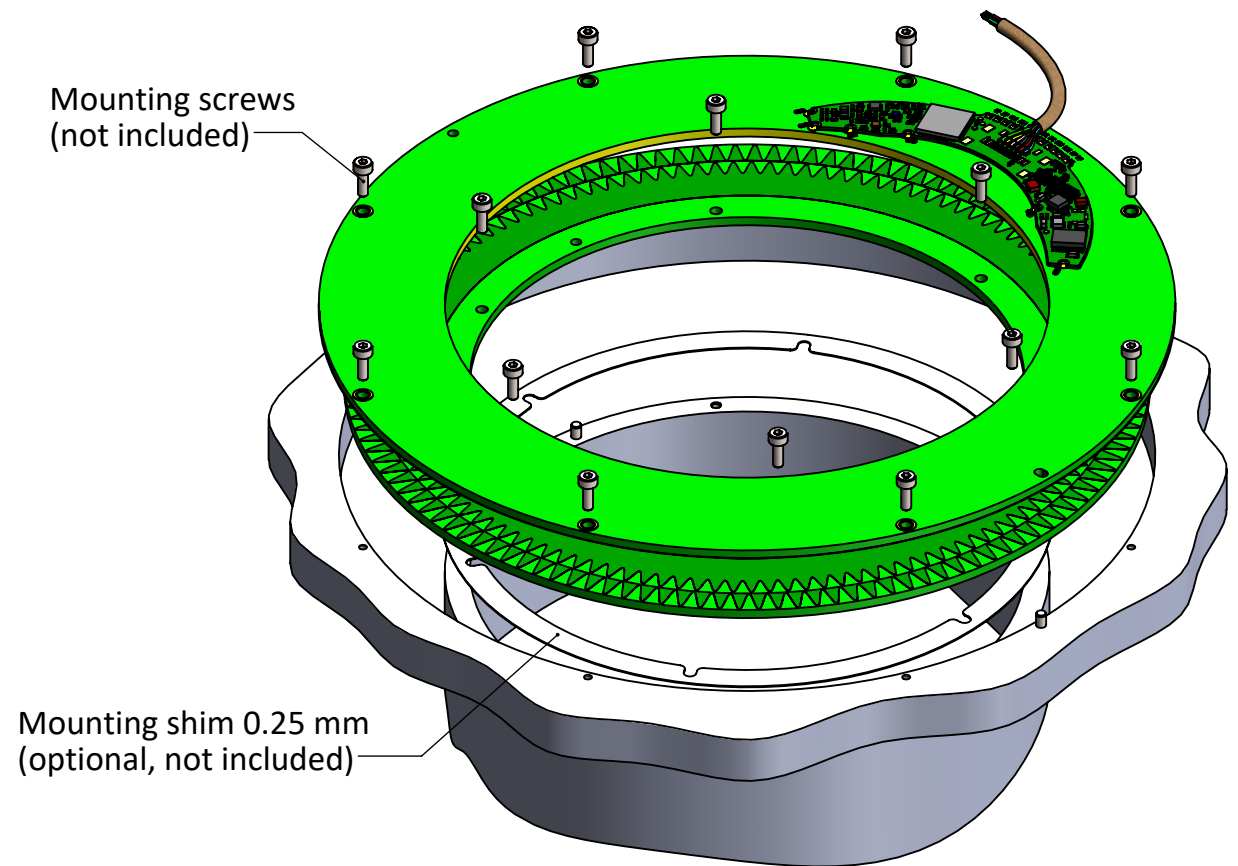
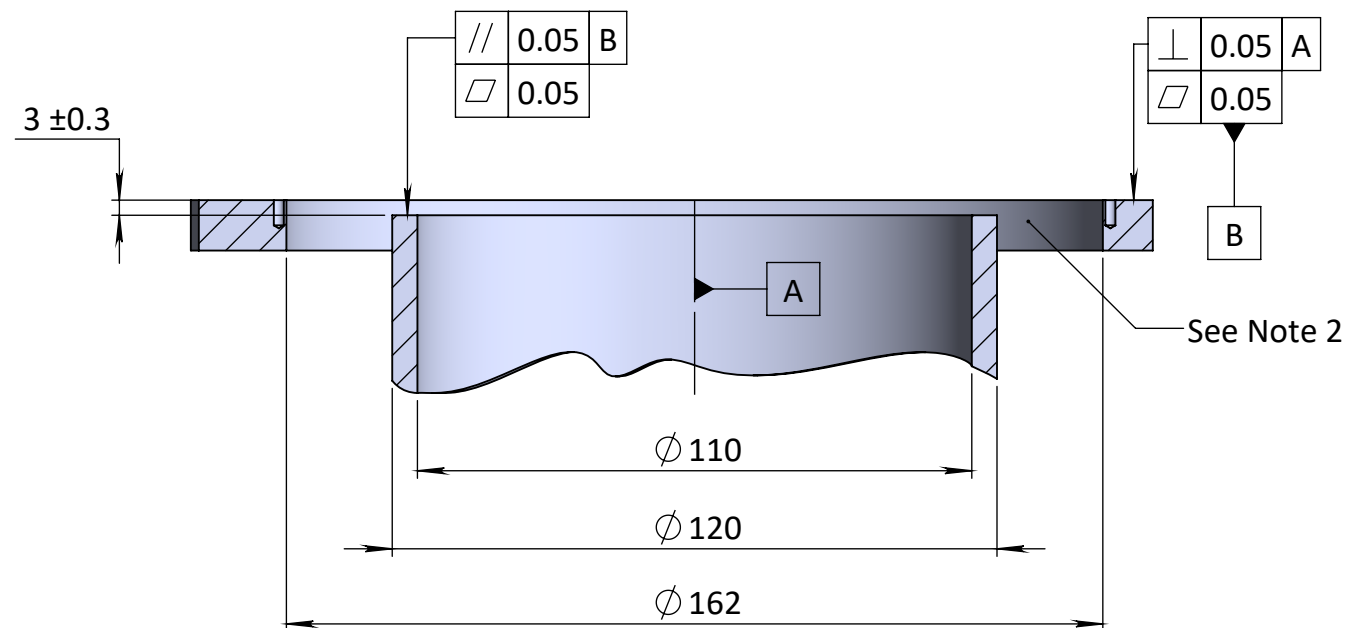
- VLX-170 Sub-configuration:**
- Connector DF13-10P-1.25V for vertical cable output

- VLX-170 Configuration:**
- Without coating
 - Connector DF13-10P-1.25H on-board (cable with pairing connector DF-13-10S is available as an accessory)
 - Push button



- VLP-170 / VLS-170 / VLT-170 Configuration:**
- With conformal coating
 - Cable soldered by flying leads

The information contained in this drawing is the sole property of Netzer Precision Position Sensors A.C.S. Ltd. Any reproduction in part or whole without the written permission of Netzer Precision Position Sensors A.C.S. Ltd. is prohibited. The drawing is confidential, and is the property of Netzer Precision Ltd. It must not be disclosed to a third party without written consent of Netzer Precision Ltd.			
	NAME	SIGNATURE	DATE
DRAWN	Michael Agami	MA	27-Apr-2025
CHK'D			
APPV'D			
UNLESS OTHERWISE SPECIFIED:			
DIMENSIONS ARE IN: mm		SURFACE FINISH: N6	
0.5 - 4.9: ±0.05 mm		5 - 30: ±0.1 mm	
31 - 120: ±0.15 mm		121 - 400: ±0.2 mm	
401 - 1000: ±0.3 mm		1001 - 2000: ±0.5 mm	
Between holes: ±0.05 mm		Angles: ±0.5°	
On all edges make chamfer 0.1 mm x 45°			
<div><div><div>Precision Position Sensors A.C.S. Ltd.</div></div><div><div>TITLE: VL-170 Mechanical Interface</div><div><div><div>MATERIAL:</div><div>Coating:</div><div>Revision :</div></div><div><div>VL-170</div><div>00</div></div></div><div><div>CAT NO.:</div><div>VL-170 ICD</div></div></div></div>			
<div><div></div><div>SCALE: 1:1.5</div></div> <div><div>A3</div><div>SHEET 1 OF 2</div></div>			



Mounting sample — exploded view

Notes:

2. It has to be 1 mm or thicker air gap or adapter mad of non-conductive material below the rotor lower surface between diameters Ø 120 and Ø 160 mm — to prevent parasitic capacitance.
3. Screws closing torques — per screws spec.
4. The specified base and shaft diameters are recommended but not mandatory.
5. Both stator and rotor are positioned and centered by M2 dowel pins.

The information contained in this drawing is the sole property of Netzer Precision Position Sensors A.C.S. Ltd. Any reproduction in part or whole without the written permission of Netzer Precision Position Sensors A.C.S. Ltd. is prohibited. The drawing is confidential, and is the property of Netzer Precision Ltd. It must not be disclosed to a third party without written consent of Netzer Precision Ltd.			
	NAME	SIGNATURE	DATE
DRAWN	Michael Agam	MA	27-Apr-2025
CHK'D			
APPV'D			
UNLESS OTHERWISE SPECIFIED:		TITLE: VL-170 Mechanical Interface	
DIMENSIONS ARE IN: mm		SURFACE FINISH: N6	
0.5 - 4.9: ±0.05 mm		5 - 30: ±0.1 mm	
31 - 120: ±0.15 mm		121 - 400: ±0.2 mm	
401 - 1000: ±0.3 mm		1001 - 2000: ±0.5 mm	
Between holes: ±0.05 mm		Angles: ±0.5°	
On all edges make chamfer 0.1 mm x 45°			
MATERIAL:		Coating:	SCALE: 1:1.5
PROJECT: VL-170		Revision: 00	A3
CAT NO.: VL-170 ICD			SHEET 2 OF 2