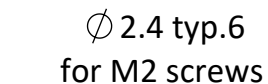


SECTION A-A
encoder dimensions



| | | |
|---|------|---|
| ⊙ | 0.05 | A |
|---|------|---|

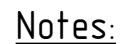
Oval \varnothing 2.1 X 3
and round \varnothing 2.1
for M2 dowel pins

Ø 2.4 typ.8
for M2
conductive screws
(see Note 1)

Ø 135
stator mounting PCD

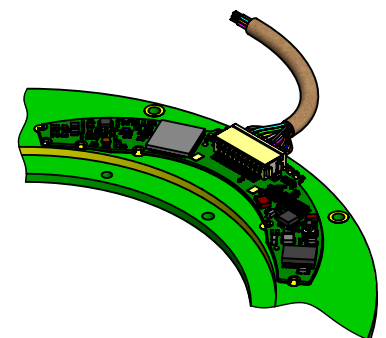
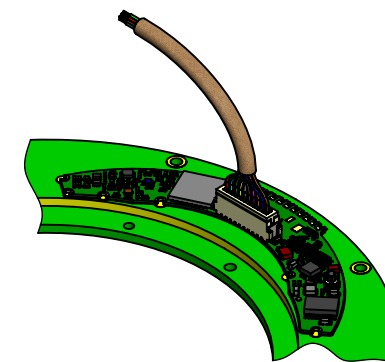
Oval \varnothing 2.1 X 3
and round \varnothing 2.1
for M2 dowel pins

The functional zone is within the ring between diameters $\varnothing 100$ and $\varnothing 130$ on both the stator and the rotor (see Note2) —



1. It is important to use conductive screws for the stator mounting for PCB grounding.

| REVISIONS | | | | |
|-----------|------|-------------|------|-------|
| ZONE | REV. | DESCRIPTION | DATE | DRAWN |

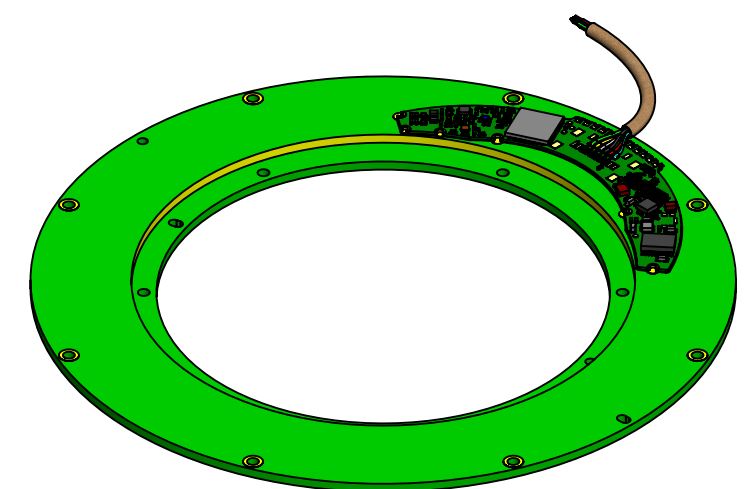


VLX-140 Sub-configuration:

- Connector DF13-10P-1.25V for vertical cable output

VLX-140 Configuration:


- Without coating
- Connector DF13-10P-1.25H on-board (cable with pairing connector DF-13-10S is available as an accessory)
- Push button



VLP-140 / VLS-140 / VLT-140
Configuration:

- With conformal coating
- Cable soldered by flying leads

The information contained in this drawing is the sole property of Netzer Precision Position Sensors A.C.S. Ltd. Any reproduction in part or whole without the written permission of Netzer Precision Position Sensors A.C.S. Ltd. is prohibited. The drawing is confidential, and is the property of Netzer Precision Ltd. It must not be disclosed to a third party without written consent of Netzer Precision Ltd.

| | | | | | | |
|--|--|--|---|--|-------------|---|
| NAME | | | SIGNATURE | | DATE | |
| DRAWN <i>Michael Agami</i> | | | MA | | 27-Apr-2025 | |
| CHK'D | | | | | | |
| APPV'D | | | | | | |
| UNLESS OTHERWISE SPECIFIED: | | | TITLE: <i>VL-140 Mechanical Interface</i> | | |  |
| DIMENSIONS ARE IN: mm | | | SURFACE FINISH: N6 | | | |
| 0.5 - 4.9: ±0.05 mm | | | 5 - 30: ±0.1 mm | | | Coating: |
| 31 - 120: ±0.15 mm | | | 121 - 400: ±0.2 mm | | | Revision: |
| 401 - 1000: ±0.3 mm | | | 1001 - 2000: ±0.5 mm | | | 00 |
| Between holes: ±0.05 mm | | | Angles: ±0.5° | | | A3 |
| On all edges make chamfer 0.1 mm x 45° | | | CAT NO.: <i>VL-140 ICD</i> | | | SHEET 1 OF 2 |

A

A

B

B

C

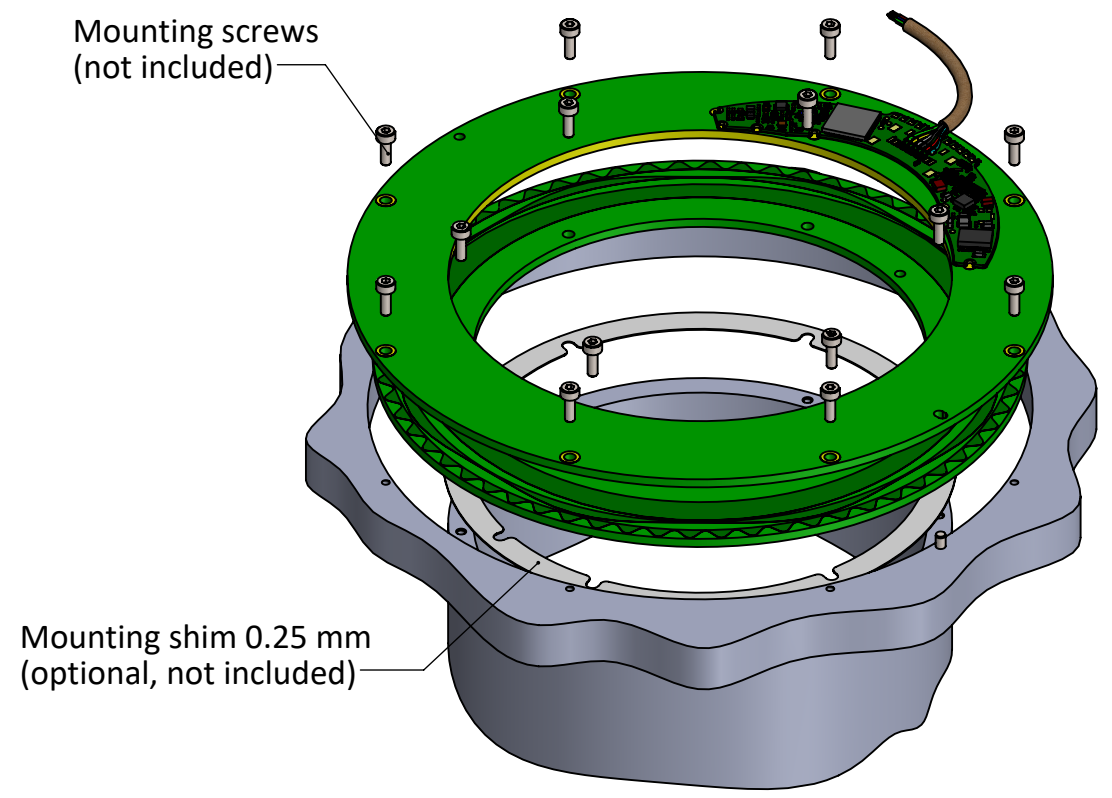
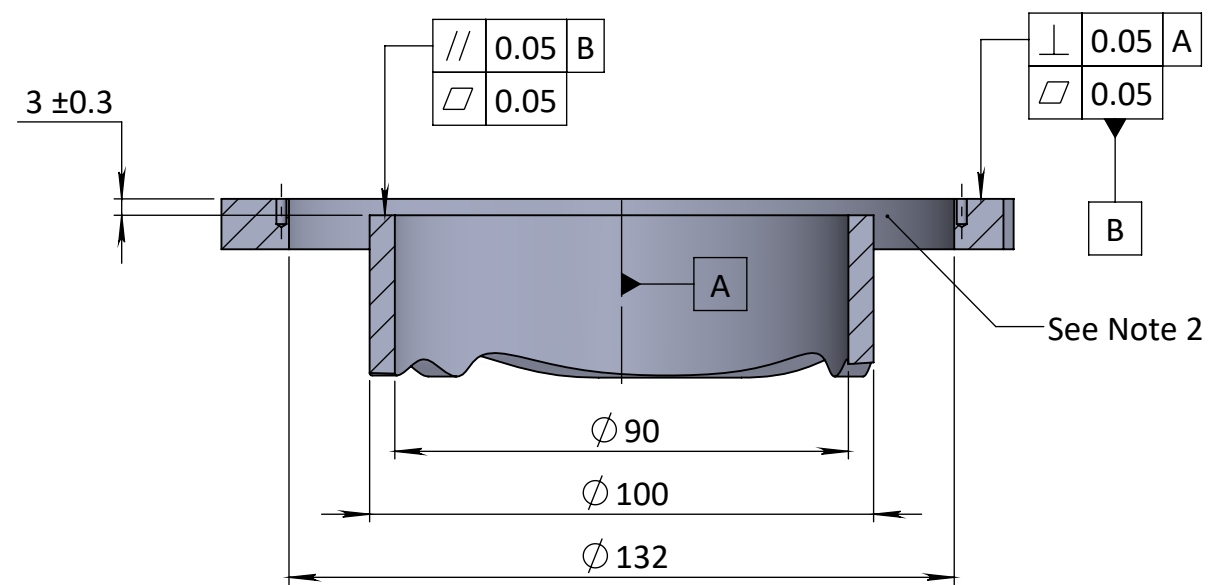
C

D

D

E

F



Mounting sample — exploded view

Notes:

- 2. It has to be 1 mm or thicker air gap or adapter mad of non-conductive material below the rotor lower surface between diameters $\phi 100$ and $\phi 130$ mm — to prevent parasitic capacitance.
- 3. Screws closing torques — per screws spec.
- 4. The specified base and shaft diameters are recommended but not mandatory.
- 5. Both stator and rotor are positioned and centered by M2 dowel pins.

| | | | |
|---|---------------|------------------------------------|--------------|
| The information contained in this drawing is the sole property of Netzer Precision Position Sensors A.C.S. Ltd. Any reproduction in part or whole without the written permission of Netzer Precision Position Sensors A.C.S. Ltd. is prohibited. The drawing is confidential, and is the property of Netzer Precision Ltd. It must not be disclosed to a third party without written consent of Netzer Precision Ltd. | | | |
| | NAME | SIGNATURE | DATE |
| DRAWN | Michael Agami | MA | 27-Apr-2025 |
| CHK'D | | | |
| APPV'D | | | |
| UNLESS OTHERWISE SPECIFIED: | | TITLE: VL-140 Mechanical Interface | |
| DIMENSIONS ARE IN: mm | | SURFACE FINISH: N6 | |
| 0.5 - 4.9: ±0.05 mm | | 5 - 30: ±0.1 mm | |
| 31 - 120: ±0.15 mm | | 121 - 400: ±0.2 mm | |
| 401 - 1000: ±0.3 mm | | 1001 - 2000: ±0.5 mm | |
| Between holes: ±0.05 mm | | Angles: ±0.5° | |
| On all edges make chamfer 0.1 mm x 45° | | | |
| MATERIAL: | | Coating: | SCALE: 1:1.5 |
| PROJECT: VL-140 | | Revision: 00 | A3 |
| CAT NO.: VL-140 ICD | | | SHEET 2 OF 2 |