

1 2 3 4

5 6 7 8

A

B

C

D

E

F

A

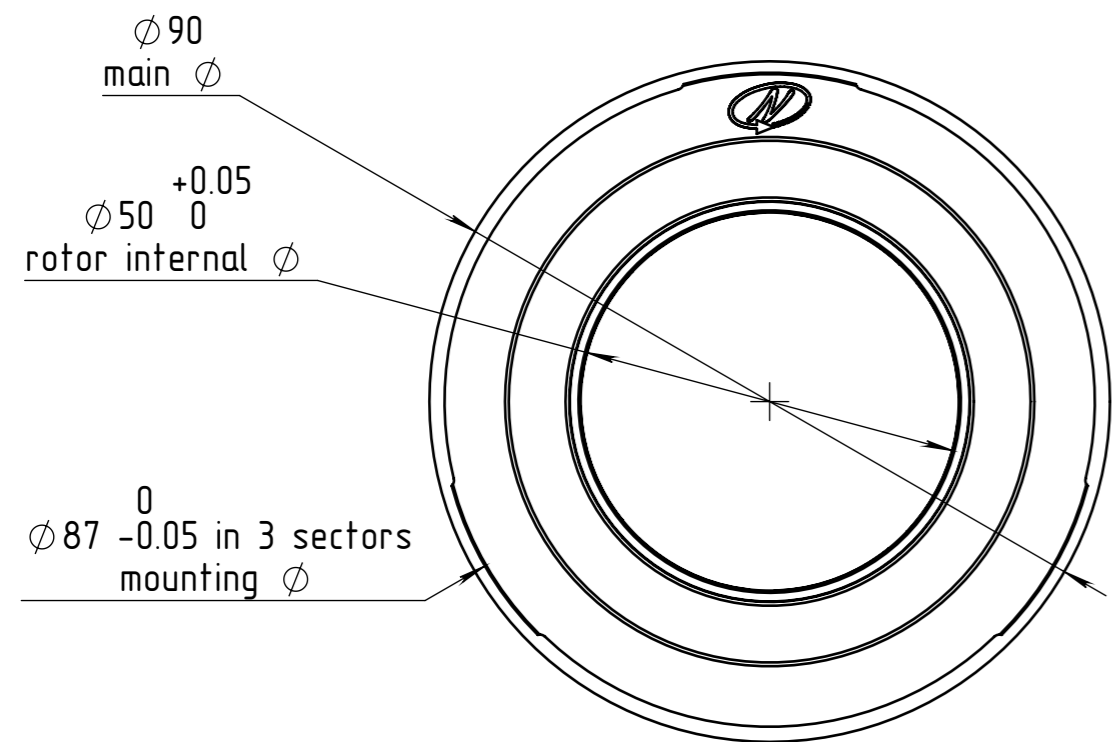
B

C

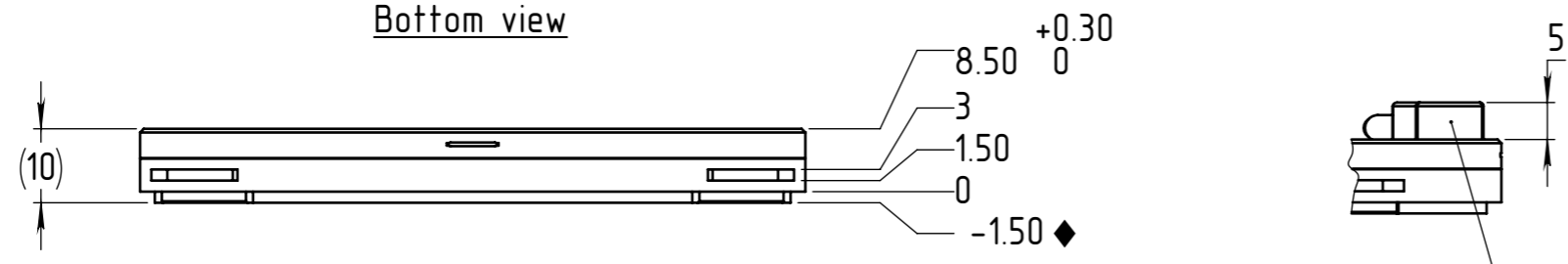
D

E

F

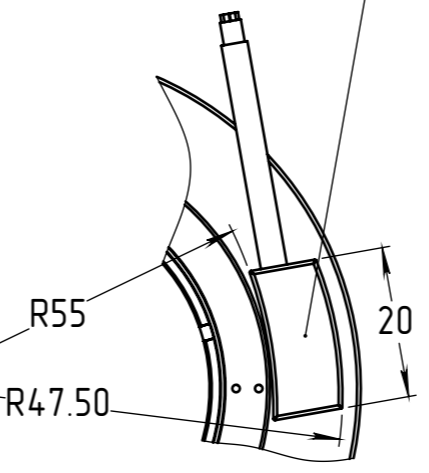


Bottom view



Strain relief dimensions

3 x M2  $\nabla$  5  
threads  
every 120°

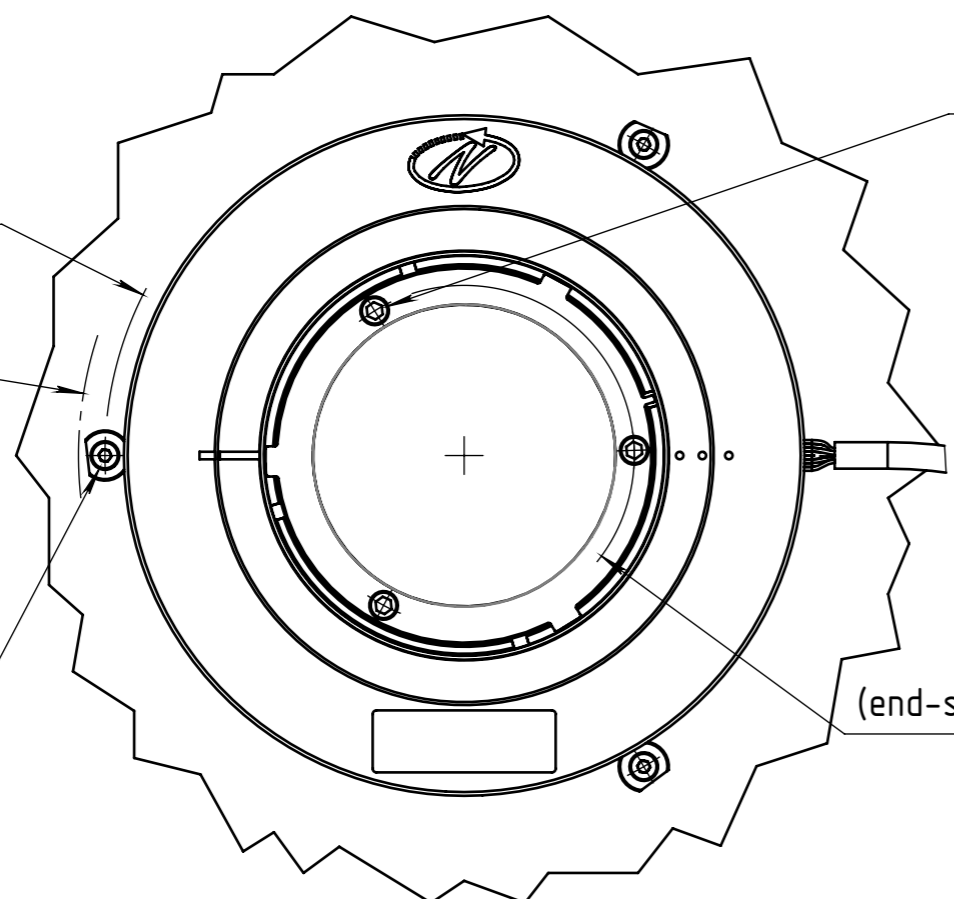


$\phi 45$   
rotor mounting  
screws PCD  
(end-shaft installation only)

$\phi 95$   
encoder mounting  
screws PCD

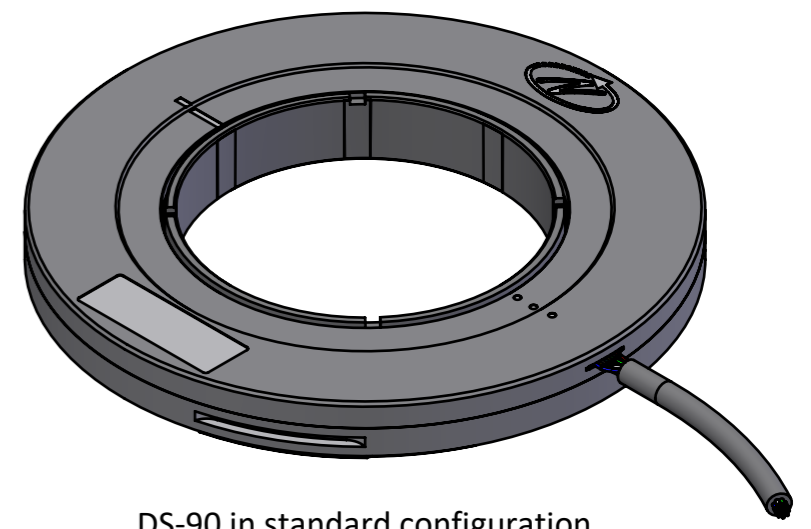
( $\phi 102$   
boundaries  $\phi$ )

3 x M2  $\nabla$  5  
threads  
every 120°

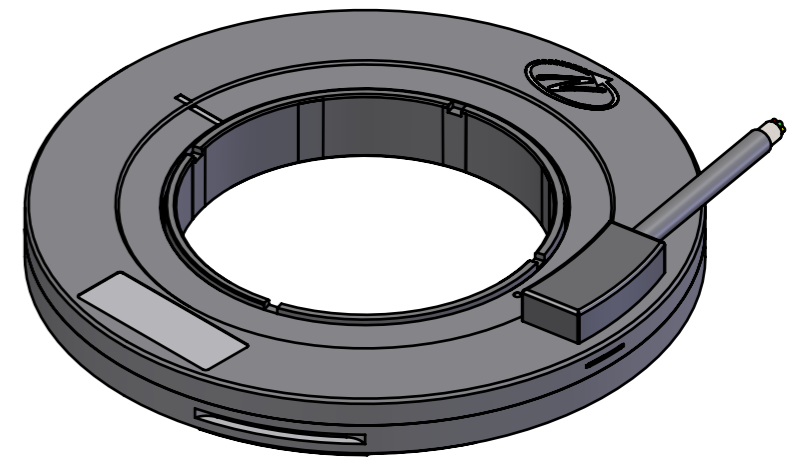


Top view

REVISIONS					
ZONE	REV.	DESCRIPTION	DATE	DRAWN	APPROVED
	01	Mid-shaft installation added, strain relief shown	16-Mar-2026	Michael A.	Ron N.



DS-90 in standard configuration



DS-90 in strain relief configuration

The information contained in this drawing is the sole property of Netzer Precision Position Sensors A.C.S. Ltd. Any reproduction in part or whole without the written permission of Netzer Precision Position Sensors A.C.S. Ltd. is prohibited. The drawing is confidential, and is the property of Netzer Precision Ltd. It must not be disclosed to a third party without written consent of Netzer Precision Ltd.

NAME	SIGNATURE	DATE	<b>Netzer</b> Precision Position Sensors A.C.S. Ltd.
DRAWN Michael Agam	MA	27-Jan-2022	
CHK'D			
APPV'D			

UNLESS OTHERWISE SPECIFIED:

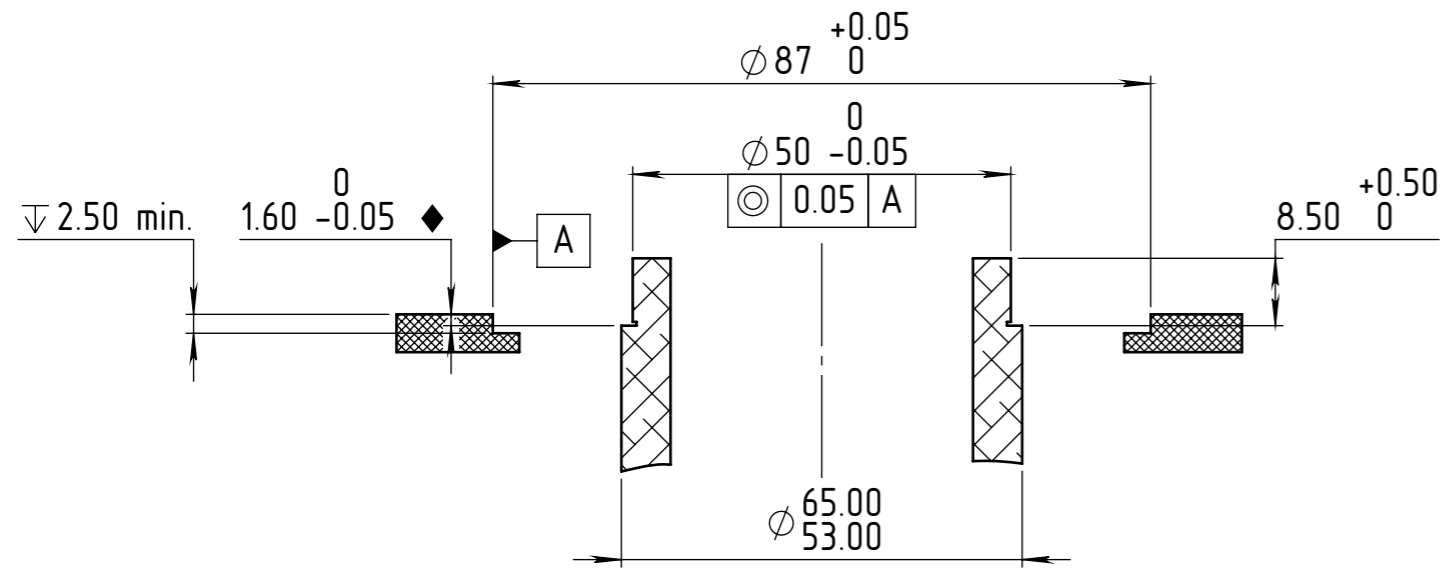
DIMENSIONS ARE IN: mm	SURFACE FINISH: N6
0.5 - 4.9: $\pm 0.05$ mm	5 - 30: $\pm 0.1$ mm
31 - 120: $\pm 0.15$ mm	121 - 400: $\pm 0.2$ mm
401 - 1000: $\pm 0.3$ mm	1001 - 2000: $\pm 0.5$ mm

Between holes:  $\pm 0.05$  mm    Angles:  $\pm 0.5^\circ$   
On all edges make chamfer 0.1 mm x 45°

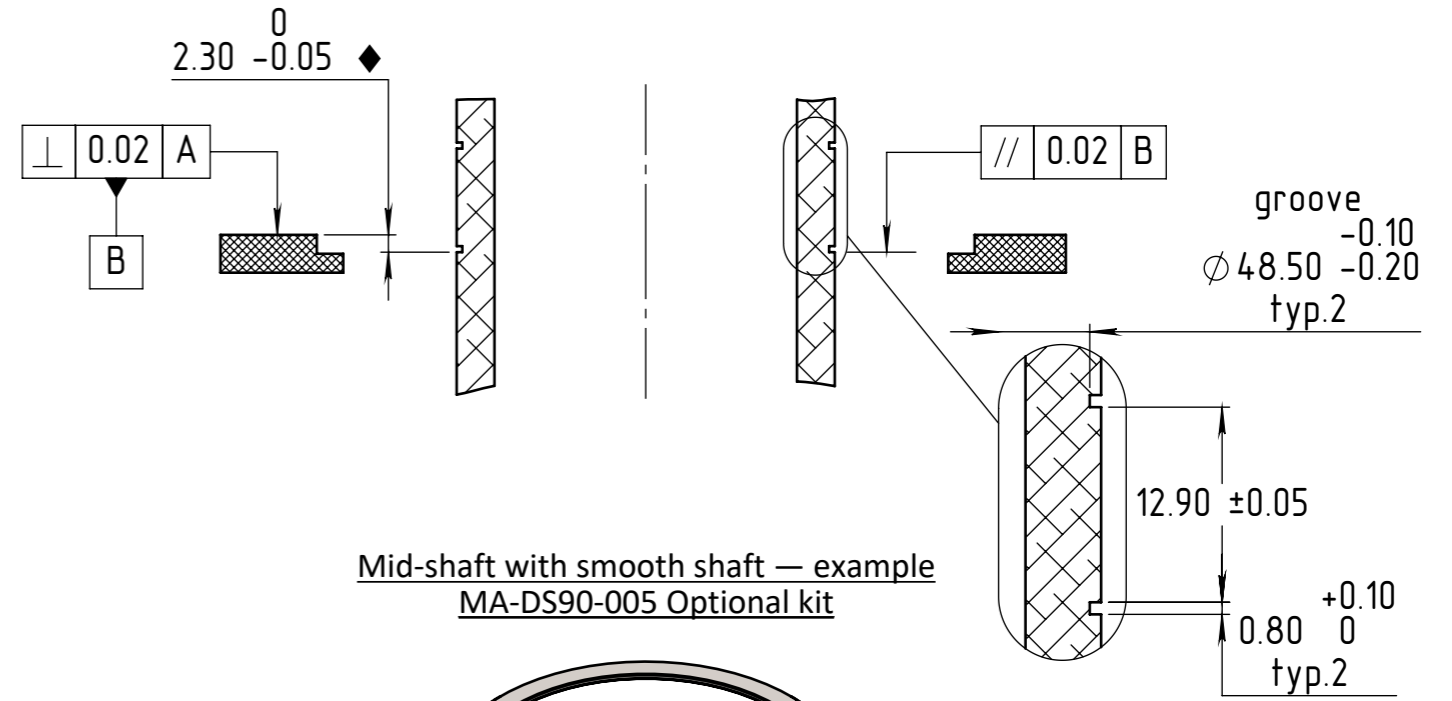
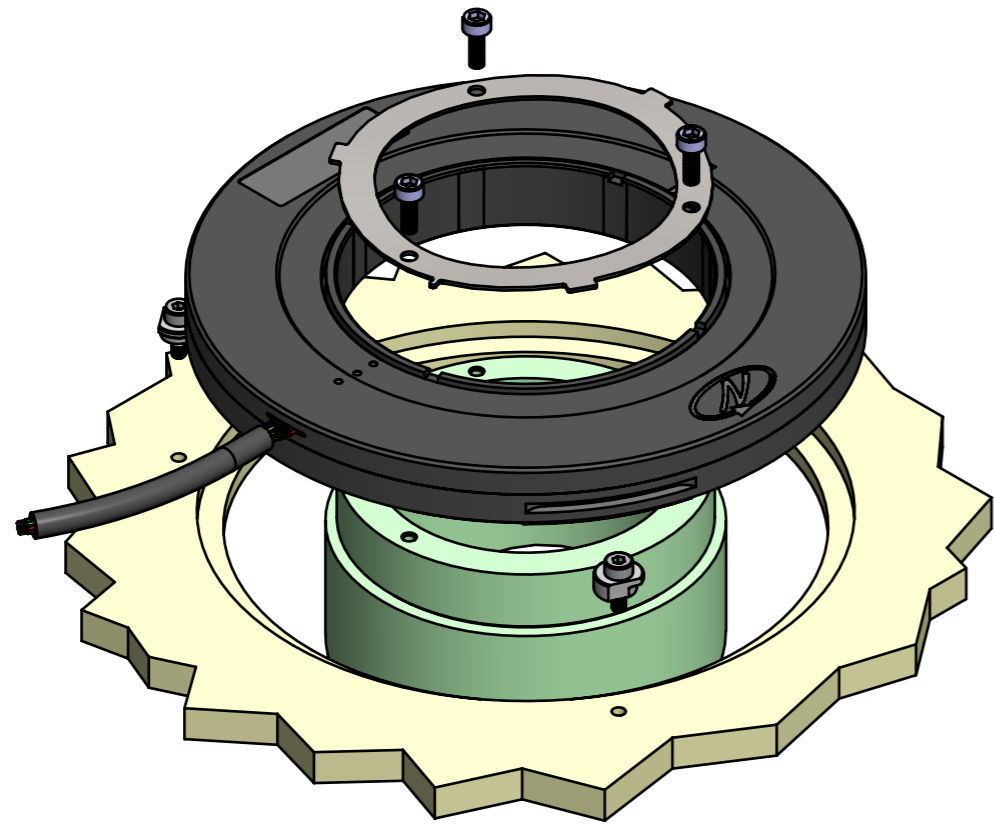
TITLE: DS-90-QR ICD	SCALE: 1:1
MATERIAL:	Coating:
PROJECT: DS-90	Revision: 01
CAT NO.: DS-90-QR ICD	A3

SHEET 1 OF 2

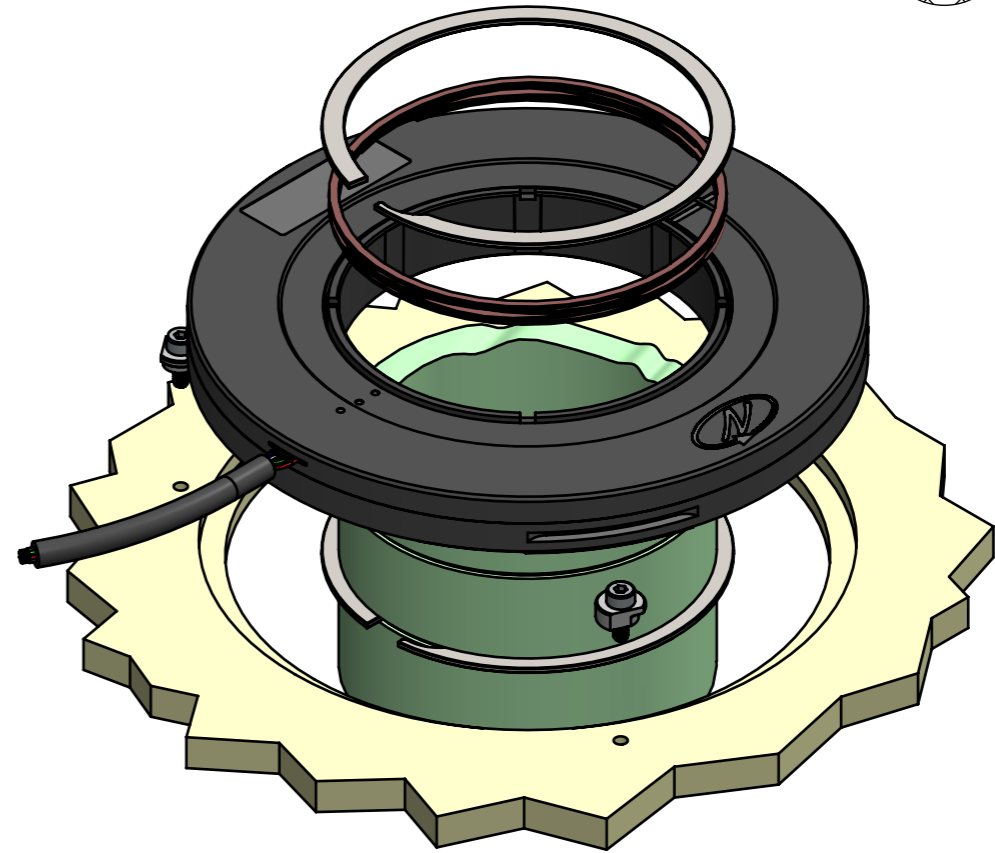
1 2 3 4 5 6 7 8



Shaft end with shoulder mounting — example  
MA-DS90-004 Optional kit



Mid-shaft with smooth shaft — example  
MA-DS90-005 Optional kit



Notes:

1. Do not use Loctite or any other glue containing Cyanoacrylate. Netzer recommends using 3M™ Scotch-Weld Epoxy Adhesive EC-2216 B/A.
2. Recommendation for the dimensions marked by  $\blacklozenge$  is to be bigger by 0.1 mm than the nominal height difference between the stator and rotor mounting surfaces. The difference is because of possible inaccuracies in a mounting assembly, as the negative error could be filled by shims, while the positive error is impossible to solve rather than by machining.
3. Geometric requirements regarding concentricity, perpendicularity and parallelism, even if specified for only one of the sections, apply to all installation methods.
4. Additional mounting kits are available:
  1. MA-DS90-001 - Shaft end, smooth shaft.

The information contained in this drawing is the sole property of Netzer Precision Position Sensors A.C.S. Ltd. Any reproduction in part or whole without the written permission of Netzer Precision Position Sensors A.C.S. Ltd. is prohibited. The drawing is confidential, and is the property of Netzer Precision Ltd. It must not be disclosed to a third party without written consent of Netzer Precision Ltd.

NAME	SIGNATURE	DATE
DRAWN Michael Agam MA		27-Jan-2022
CHK'D		
APPV'D		

UNLESS OTHERWISE SPECIFIED:  
 DIMENSIONS ARE IN: mm SURFACE FINISH: N6  
 0.5 - 4.9: ±0.05 mm 5 - 30: ±0.1 mm  
 31 - 120: ±0.15 mm 121 - 400: ±0.2 mm  
 401 - 1000: ±0.3 mm 1001 - 2000: ±0.5 mm  
 Between holes: ±0.05 mm Angles: ±0.5°  
 On all edges make chamfer 0.1 mm x 45°

TITLE: DS-90-QR ICD

MATERIAL: Coating: SCALE: 1:1

PROJECT: DS-90 Revision: 01 A3

CAT NO.: DS-90-QR ICD SHEET 2 OF 2