

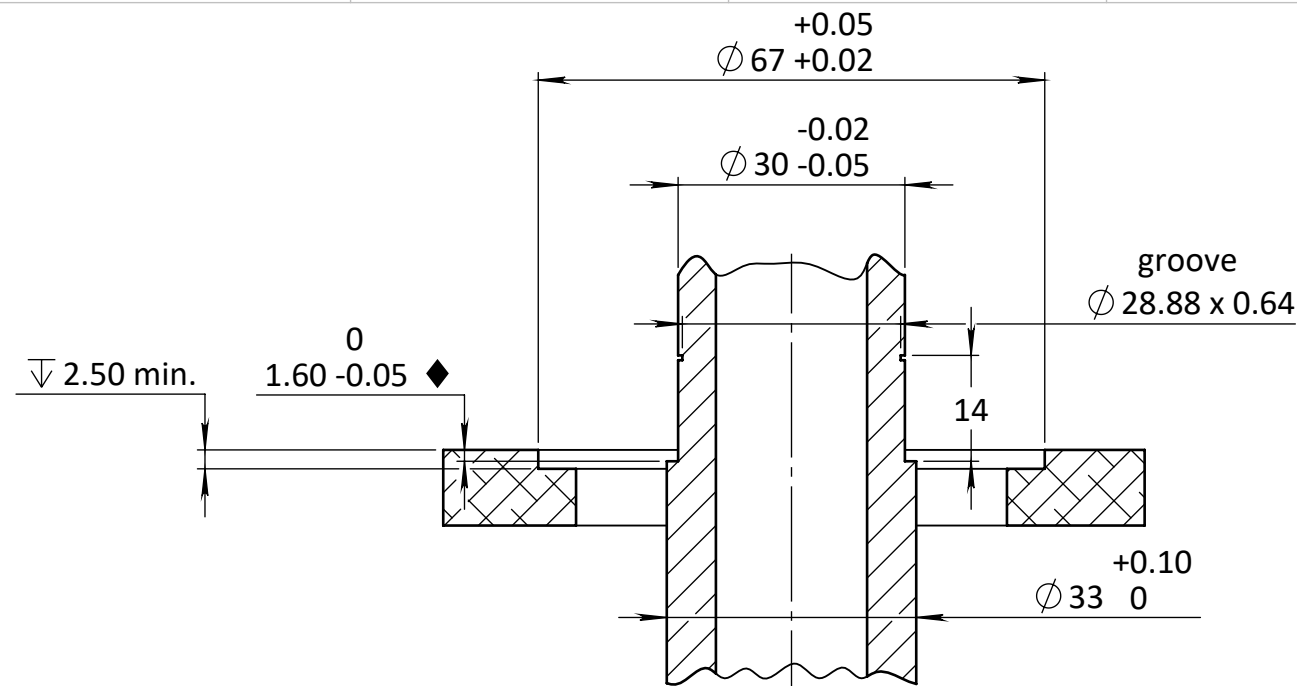
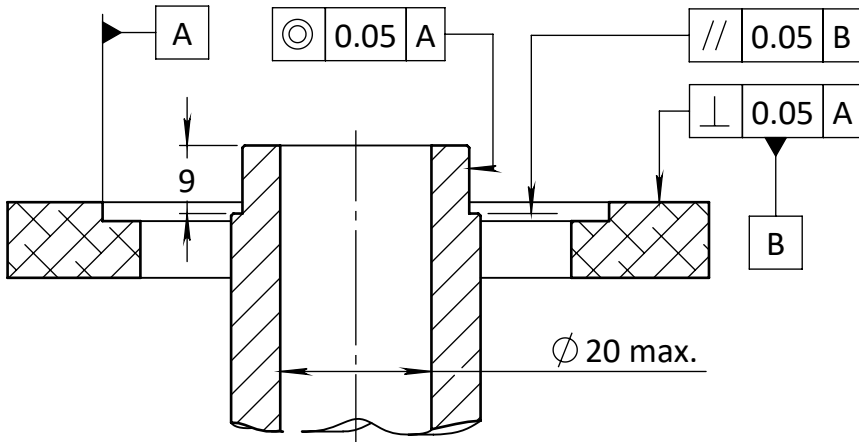


| REVISIONS | | | | | |
|-----------|------|-------------|------|-------|----------|
| ZONE | REV. | DESCRIPTION | DATE | DRAWN | APPROVED |

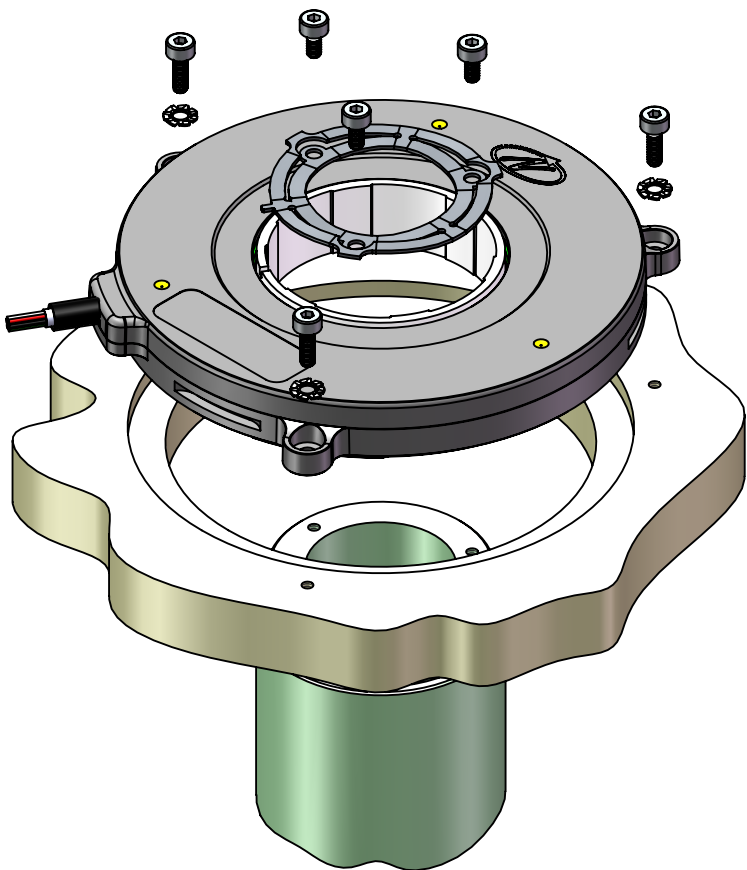
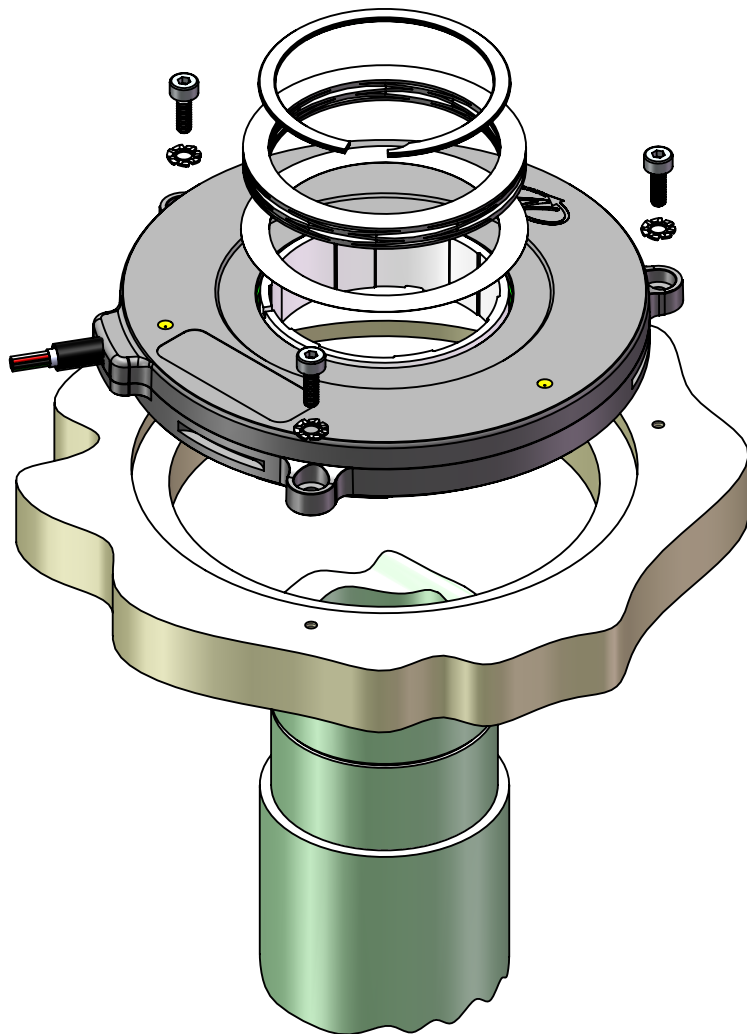
| | | | | | | |
|---|---------------|----------------------|-------------|--|---|--------------|
| The information contained in this drawing is the sole property of Netzer Precision Position Sensors A.C.S. Ltd. Any reproduction in part or whole without the written permission of Netzer Precision Position Sensors A.C.S. Ltd. is prohibited. The drawing is confidential, and is the property of Netzer Precision Ltd. It must not be disclosed to a third party without written consent of Netzer Precision Ltd. | | | | | | |
| | NAME | SIGNATURE | DATE |  Precision Position Sensors A.C.S. Ltd. | | |
| DRAWN | Michael Agami | MA | 05-Jun-2025 | | | |
| CHK'D | | | | | | |
| APPV'D | | | | | | |
| UNLESS OTHERWISE SPECIFIED: | | | | TITLE: <i>DS-70 Mechanical interface</i> |  | |
| DIMENSIONS ARE IN: mm | | SURFACE FINISH: N6 | | | | |
| 0.5 - 4.9: ±0.05 mm | | 5 - 30: ±0.1 mm | | MATERIAL: | Coating: Note 3 | SCALE: 1:1 |
| 31 - 120: ±0.15 mm | | 121 - 400: ±0.2 mm | | | | |
| 401 - 1000: ±0.3 mm | | 1001 - 2000: ±0.5 mm | | PROJECT: <i>DS-70</i> | Revision: <i>00</i> | A3 |
| Between holes: ±0.05 mm | | Angles: ±0.5° | | CAT NO.: <i>DS-70 ICD</i> | | SHEET 1 OF 2 |
| On all edges make chamfer 0.1 mm x 45° | | | | | | |



Mid-shaft with hollow shaft - example
MA-DS70-002 Optional kit



End-shaft with hollow shaft - example
MA-DS70-004 Optional kit



Notes:

1. Do not use Loctite or any other glue containing Cyanoacrylate. Netzer recommends using 3M Scotch-Weld Epoxy Adhesive EC-2216 B/A.
2. Recommendation for the dimensions marked by \blacklozenge is to be bigger by 0.1 mm than the nominal height difference between the stator and rotor mounting surfaces.
The difference is because of possible inaccuracies in a mounting assembly, as the negative error could be filled by shims, while the positive error is impossible to solve rather than by machining.

| | | | |
|---|-----------|---------------------------|-----------------------------------|
| The information contained in this drawing is the sole property of Netzer Precision Position Sensors A.C.S. Ltd. Any reproduction in part or whole without the written permission of Netzer Precision Position Sensors A.C.S. Ltd. is prohibited. The drawing is confidential, and is the property of Netzer Precision Ltd. It must not be disclosed to a third party without written consent of Netzer Precision Ltd. | | | |
| NAME | SIGNATURE | DATE | |
| DRAWN Michael Agami | MA | 05-Jun-2025 | |
| CHK'D | | | |
| APPV'D | | | |
| UNLESS OTHERWISE SPECIFIED: | | | TITLE: DS-70 Mechanical interface |
| DIMENSIONS ARE IN: mm | | SURFACE FINISH: N6 | |
| 0.5 - 4.9: ± 0.05 mm | | 5 - 30: ± 0.1 mm | |
| 31 - 120: ± 0.15 mm | | 121 - 400: ± 0.2 mm | |
| 401 - 1000: ± 0.3 mm | | 1001 - 2000: ± 0.5 mm | |
| Between holes: ± 0.05 mm | | Angles: $\pm 0.5^\circ$ | |
| On all edges make chamfer 0.1 mm x 45° | | | |
| MATERIAL: | | | Coating: Note 3 |
| PROJECT: DS-70 | | | Revision: 00 |
| CAT NO.: DS-70 ICD | | | SCALE: 1:1 |
| | | | A3 |
| | | | SHEET 2 OF 2 |