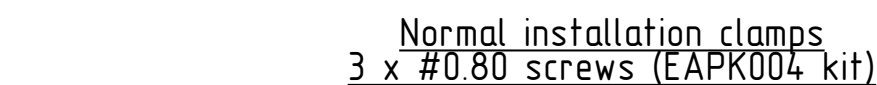
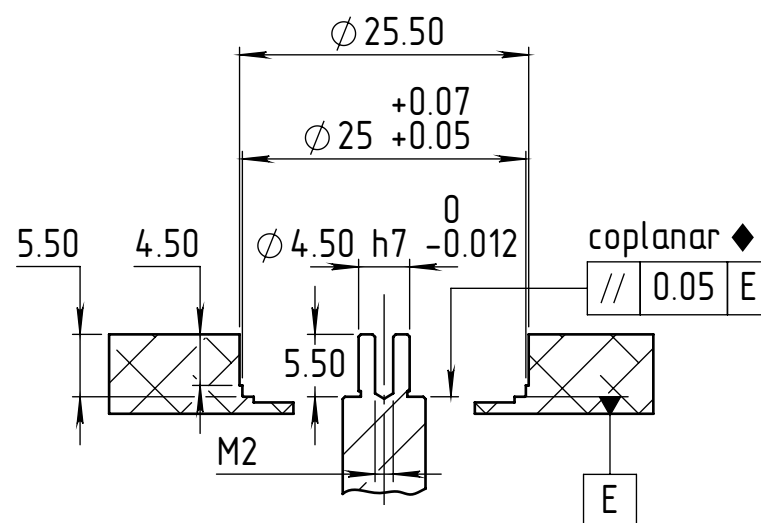
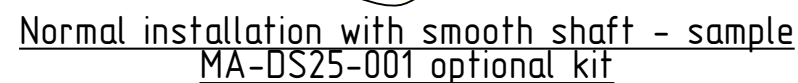




### Deep installation with rotor insert - sample MA-DS25-005 optional kit



1. Do not use Loctite or any other glue containing Cyanoacrylate. Netzer recommends using 3M Scotch-Weld Epoxy Adhesive EC-2216 B/A.
2. Recommendation for the dimensions marked by  $\blacklozenge$  is to be smaller by 0.1 mm than the nominal height difference between the stator and rotor mounting surfaces.  
The difference is because of possible inaccuracies in a mounting assembly, as the negative error could be filled by shims, while the positive error is impossible to solve rather than by machining.

The information contained in this drawing is the sole property of Netzer Precision Position Sensors A.C.S. Ltd. Any reproduction in part or whole without the written permission of Netzer Precision Position Sensors A.C.S. Ltd. is prohibited. The drawing is confidential, and is the property of Netzer Precision Ltd. It must not be disclosed to a third party without written consent of Netzer Precision Ltd.

	NAME	SIGNATURE	DATE			
DRAWN	Michael A.	MA	05-Jun-2025			
CHK'D	Ran N.	RN	05-Jun-2025			
APPV'D	Ran N.	RN	05-Jun-2025			
<b>UNLESS OTHERWISE SPECIFIED:</b>				TITLE:	<i>DS-25 Mechanical interface</i>	
DIMENSIONS ARE IN: mm		SURFACE FINISH: N6				
0.5 - 4.9: ±0.05 mm		5 - 30: ±0.1 mm		MATERIAL:	Coating:	Note 3
31 - 120: ±0.15 mm		121 - 400: ±0.2 mm		PROJECT :	Revision :	A3
401 - 1000: ±0.3 mm		1001 - 2000: ±0.5 mm				
Between holes: ±0.05 mm		Angles: 0.5°		CAT NO.:	00	
On all edges make chamfer 0.1 mm x 45°						
				SHEET 2 OF 2		