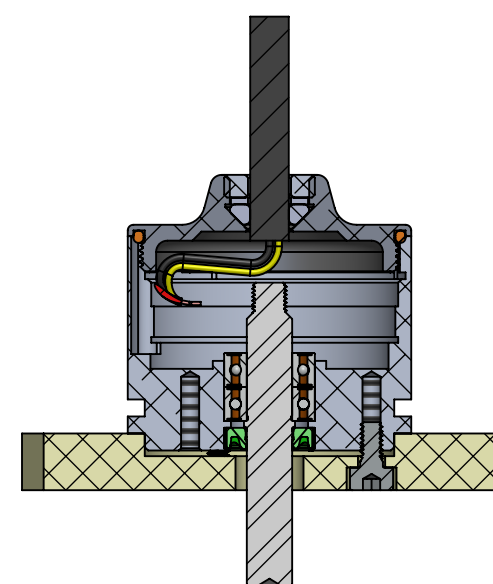
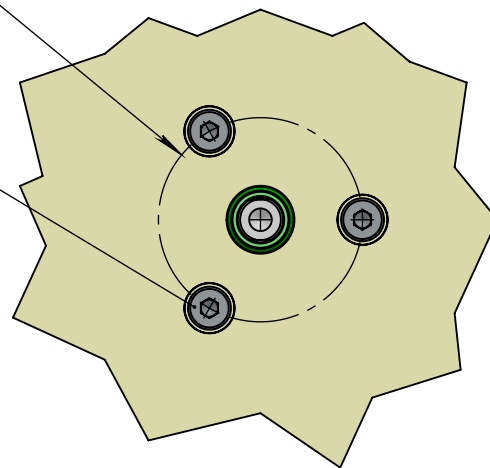


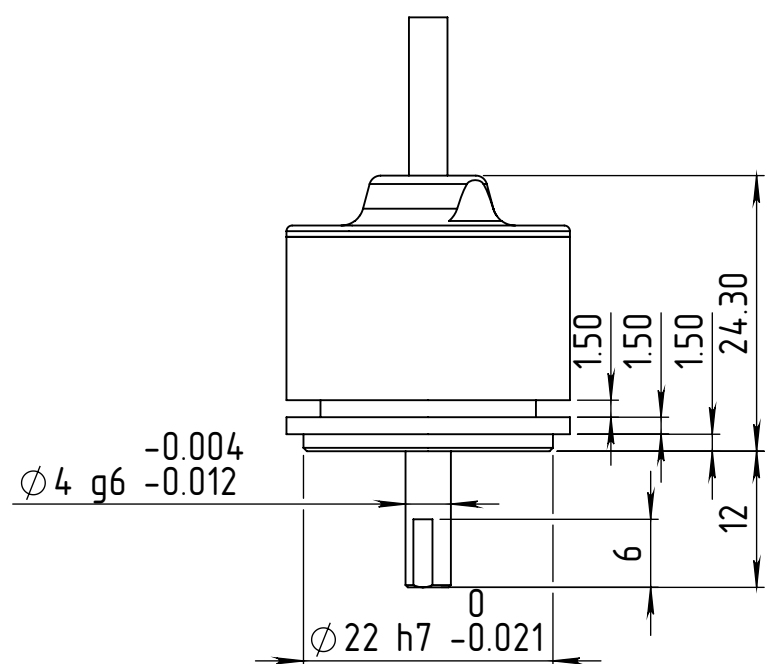
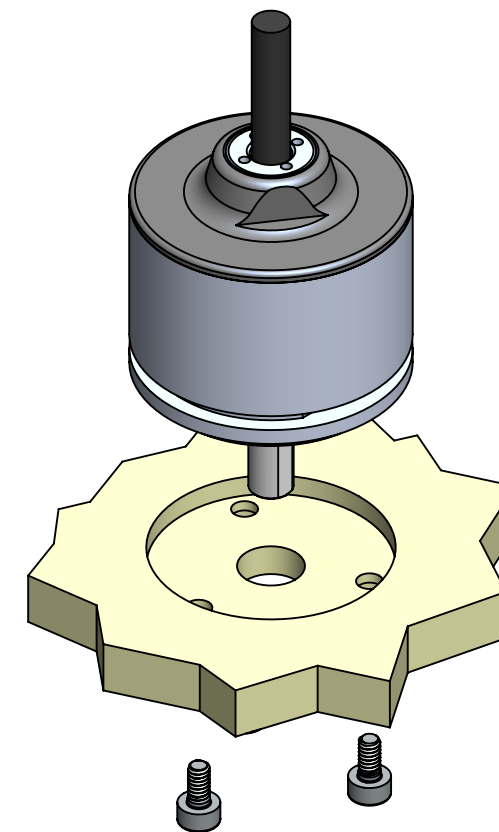
Typical mounting requirements

Ø 18 or Ø 14
by customer's choice

Three M2 screws,
every 120°



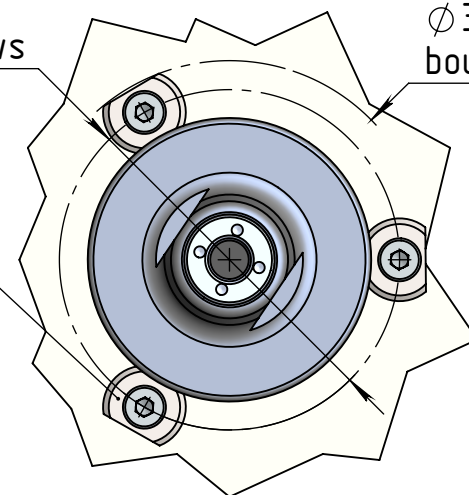
Flange bottom mounting - sample
(with three standard screws)



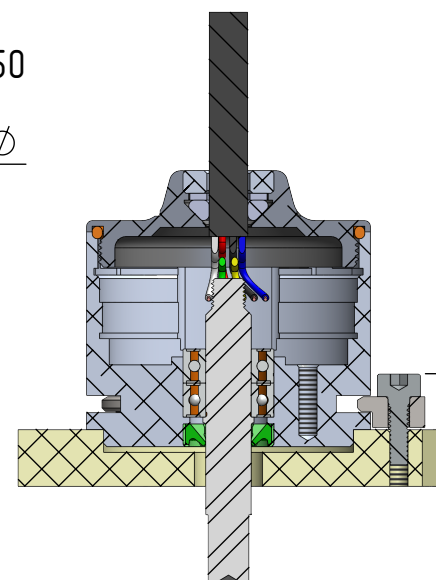
Profile view

Ø 30
PCD for clamps screws

Three clamps MA-00007
with M2 screws,
every 120°

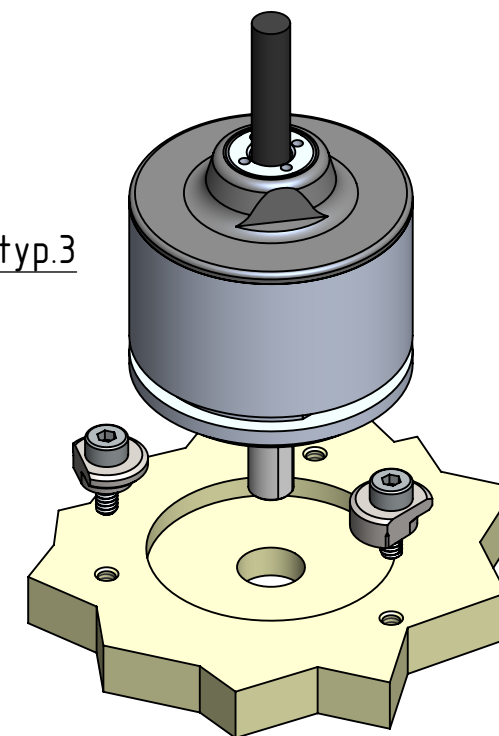


Ø 35.11 ^{+0.50}/₀
boundary Ø

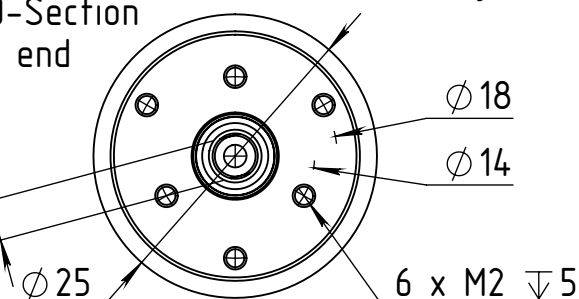


5 typ.3

Special clamps mounting - sample
(with three clamps supplied as optional kit EAPK005)



3.60 - double D-Section
on shaft's end



Bottom view

Two different PCDs for mounting screws
by customer's choice

The information contained in this drawing is the sole property of Netzer Precision Motion Sensors Ltd. Any reproduction in part or whole without the written permission of Netzer Precision Motion Sensors Ltd. is prohibited. The drawing is confidential, and is the property of Netzer Precision Ltd. It must not be disclosed to a third party without written consent of Netzer Precision Ltd.

NAME	SIGNATURE	DATE
DRAWN Michael Agami	MA	23-Jul-2019
CHK'D		
APPV'D		
UNLESS OTHERWISE SPECIFIED:		
DIMENSIONS ARE IN: mm		SURFACE FINISH: N6
0.5 - 4.9: ±0.05 mm	5 - 30: ±0.1 mm	
31 - 120: ±0.15 mm	121 - 400: ±0.2 mm	
401 - 1000: ±0.3 mm	1001 - 2000: ±0.5 mm	
Between holes: ±0.05 mm	Angles: ±0.5°	
On all edges make chamfer 0.1 mm x 45°		
TITLE: DL-25-QR ICD		
MATERIAL:		Coating:
PROJECT: DL-25		Revision: 00
CAT NO.: DL-25-QR ICD		SCALE: 1.5:1
		A3
		SHEET 1 OF 1