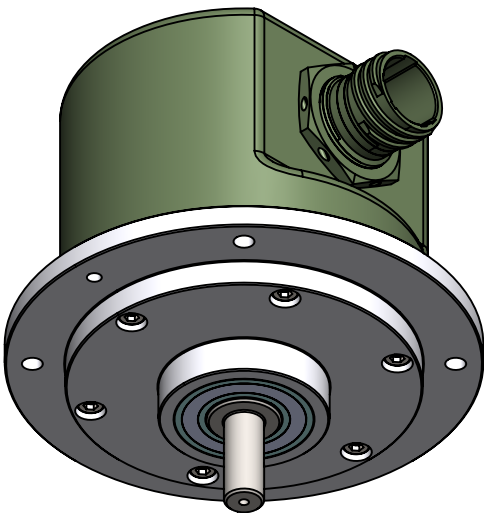
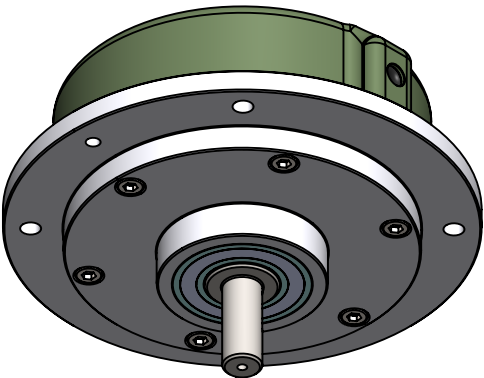




| REVISIONS | | | | | |
|-----------|------|-------------|------|-------|----------|
| ZONE | REV. | DESCRIPTION | DATE | DRAWN | APPROVED |



DL-66 - General view
Amphenol MIL-DTL-38999 Connector



DL-66 with low cover - General view
Output cable with customizable length and connector

| | | | |
|--|---------------|-----------|-------------|
| The information contained in this drawing is the sole property of Netzer Precision Position Sensors A.C.S. Ltd. Any reproduction in part or whole without the written permission of Netzer Precision Position Sensors A.C.S. Ltd. is prohibited. The drawing is confidential, and is the property of Netzer Precision Ltd. It must not be disclosed to a third party without written consent of Netzer Precision Ltd. | | | |
| | NAME | SIGNATURE | DATE |
| DRAWN | Michael Agami | MA | 29-May-2025 |
| CHK'D | | | |
| APPV'D | | | |
| <div>UNLESS OTHERWISE SPECIFIED:</div> <div>DIMENSIONS ARE IN: mm</div> <div>SURFACE FINISH: N6</div> <div>0.5 - 4.9: ±0.05 mm</div> <div>5 - 30: ±0.1 mm</div> <div>31 - 120: ±0.15 mm</div> <div>121 - 400: ±0.2 mm</div> <div>401 - 1000: ±0.3 mm</div> <div>1001 - 2000: ±0.5 mm</div> <div>Between holes: ±0.05 mm</div> <div>Angles: ±0.5°</div> <div>On all edges make chamfer 0.1 mm x 45°</div> | | | |
| <div><div> Precision Position Sensors A.C.S. Ltd.</div><div><div>TITLE: DL-66 Mechanical Interface</div><div><div>MATERIAL:</div><div>Coating: Note 3</div><div>Revision : 00</div></div><div><div>PROJECT : DL-66</div><div>CAT NO. : DL-66 ICD</div></div></div><div><div></div><div><div>SCALE: 1:1.5</div><div>A3</div><div>SHEET 1 OF 1</div></div></div></div> | | | |