



## Wheel Position Measuring Tester

### APPLICATION

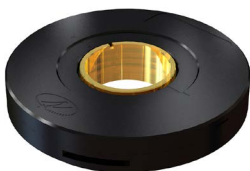
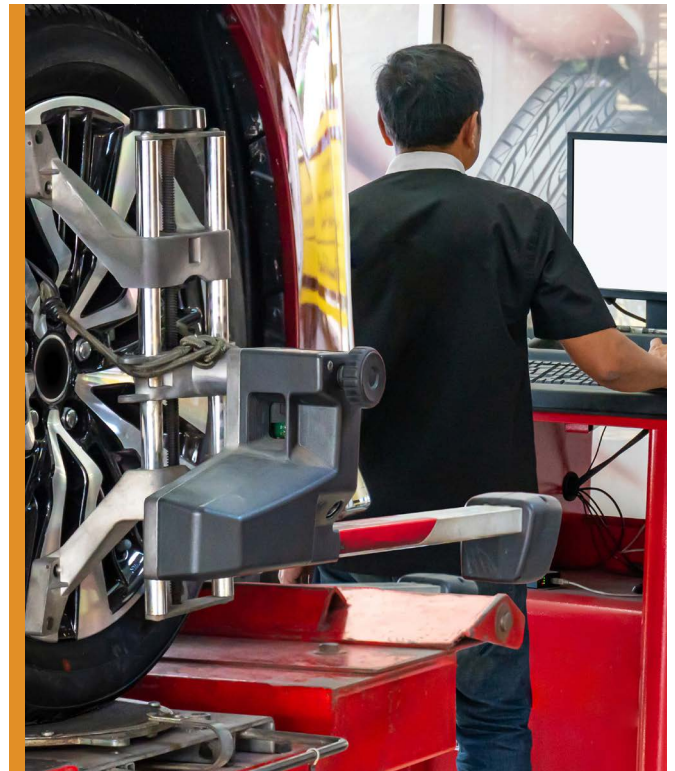
- Vehicle Kinematics and Compliance test machine.
- Designed to combine the most realistic possible simulation of an on-road vehicle behavior with the highest possible measurement accuracy.
- High precision and resolution for very accurate slow motion and long range pointing.
- Frameless & contactless with a negligible rotor weight, Introducing no extra weight & inertia (load) to the system.

### REQUIREMENTS

- High accuracy  $\leq 0.005^\circ$
- Harsh environment
- Shocks & vibrations
- Extreme temperatures
- Hollow shaft and low profile - High integration level

### POSITION SENSOR

- DS-58 & DS-70 with extended accuracy from DS line of Netzer absolute position Electric Encoder™.
- Wide & extreme working temperature & vibration span.
- Compact, low profile, lightweight & wide bore: Allowing high integration level for a small size system design.



### PRODUCT FEATURES



HIGH PRECISION



LOW PROFILE



HOLLOW SHAFT



RESISTANCE TO  
MAGNETIC FIELDS

● *Moving. Precisely. With You.*